

APPENDIX A

**HAZARD IDENTIFICATION,
RISK ASSESSMENT
AND
VULNERABILITY**

FLOOD

Flood plains are relatively flat lands that border streams and rivers that are normally dry, but are covered with water during floods. The susceptibility of a stream to flooding is dependent upon several different variables. Among these are topography, ground saturation, rainfall intensity and duration, soil types, drainage, drainage patterns of streams, and vegetative cover. A large amount of rainfall over a short time period can result in flash flood conditions. A small amount of rain can also result in floods where the soil is saturated from a previous wet period or if rain is concentrated in an area of impermeable surfaces such as large parking lots, paved roadways, etc. Topography and ground cover are contributing factors for floods where water runoff is greater in areas with steep slopes and little or no vegetation. The severity of a flood is usually measured in terms of depth of flooding.

Flooding occurs when the volume of water exceeds the ability of a water body (stream, river, or lake) to contain it within its normal banks. Floodplains serve three major purposes: Natural water storage and conveyance, water quality maintenance, and groundwater recharge. These three purposes are greatly inhibited when floodplains are misused or abused through improper and unsuitable land development. For example, if floodplains are filled to construct a building, valuable water storage and recharge areas are lost. This causes unnecessary flooding in previously dry areas and can damage buildings and other structures.

Severe flooding within McDuffie County is relatively infrequent. There have been six documented flood events in the county in the past 20 years. These flooding events have caused nearly \$30,000 in damage. The hazard frequency table indicates there is a 30 percent chance of an annual flooding event in the county.

Based on tax data, parcel and flood maps, all or a portion of 1,002 known structures/properties valued at approximately \$100 million and a population of 412 are located in known floodplains. The committee identified specific mitigation goals, objectives and action items related to flooding, which can be found in Chapter III, Section I.

Location	Date	Type	Deaths	Injuries	Property Damage	Description
Countywide	10/4/1995	Flash Flood	0	0	0	Flood conditions were reported beginning at 1:00 am and ending at 7:00 am, resulting in 18 hours of flash flooding.
NORTH PORTION	6/13/2001	Flash Flood	0	0	0	Sheriff reported water moving over Folly Lake Bridge and on Stagecoach road.
THOMSON	9/10/2008	Flash Flood	0	0	10000	DOT reported secondary dirt roads washed out from flash flooding that will have to be re-excavated.
BONEVILLE	1/24/2010	Flash Flood	0	0	20000	Sheriff reported flooding at apartment complex with up to a foot of water in several apartments.
Countywide	12/29/2015	Flood	0	0	0	Rutted roads and swollen creeks and ponds were the aftermath of 4.81 inches of rain that fell in Thomson-McDuffie County between Dec. 21 and Dec. 28.
Thomson	12/30/2016	Flash Flood	0	0	0	According to WTHO-FM, the Thomson area has received 7.11" from Dec. 21 through the morning of Dec. 31. Throughout the day on Dec. 30, the radio station measured 1.52 inches. Roads including First Avenue, Manassass Drive, A Street and Sill Street were affected by the flooding and standing water.
Countywide	9/11/2017	Heavy Rain	0	0	0	AWOS unit at Thomson McDuffie Co Airport measured a total of 5.37 inches of rain.
			0	0	\$30,000.00	




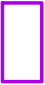
Jurisdiction	Name	Hazard Score	Value	Replacement Value Year	Building size	Content Value	Facility type	Risk	Day	Night
McDuffie County	Bridge ID 189-0021-0/Big Brier Creek	3	350,000	2010	5,894		Government, Government, Water/Sewer, Water/Sewer	Essential, Transportation	2	2
McDuffie County	Bridge ID 189-0023-0/Mattox Creek	3	240,000	2010	4,020		Government, Government, Water/Sewer, Water/Sewer	Essential, Transportation	2	2
McDuffie County	Bridge ID 189-0024-0/Big Brier Creek	3	350,000	2010	6,515		Government, Government, Water/Sewer, Water/Sewer	Essential, Transportation	2	2
McDuffie County	Bridge ID 189-5002-0/Germany Creek	3	95,000	2010	1,200		Government, Government, Water/Sewer, Water/Sewer	Essential, Transportation	2	2
McDuffie County	Bridge ID 189-5003-0/Little Germany Creek	3	60,000	2010	696		Government, Government, Water/Sewer, Water/Sewer	Essential, Transportation	2	2
McDuffie County	Bridge ID 189-5004-0/Headstall Creek	3	70,000	2010	888		Government, Water/Sewer	Essential, Transportation	2	2
McDuffie County	Bridge ID 189-5007-0/Big Brier Creek	3	196,955	2010	3,539		Government, Water/Sewer	Essential, Transportation	2	2
McDuffie County	Bridge ID 189-5008-0/Big Brier Creek	3	95,000	2010	1,296		Government, Government, Water/Sewer, Water/Sewer	Essential, Transportation	2	2
McDuffie County	Bridge ID 189-5009-0/Little Germany Creek	3	57,600	2010	552		Government, Water/Sewer	Transportation	2	2
McDuffie County	Bridge ID 189-5011-0/Hart Creek	3	58,400	2010	768		Government, Water/Sewer	Transportation	2	2
McDuffie County	Bridge ID 189-5012-0/Chill Creek	3	54,800	2010	696		Government, Water/Sewer	Transportation	2	2
McDuffie County	Bridge ID 189-5013-0/Germany Creek	3	88,400	2010	1,368		Government, Water/Sewer	Transportation	2	2
McDuffie County	Bridge ID 189-5014-0/Mattox Creek	3	71,600	2010	1,032		Government, Water/Sewer	Transportation	2	2
McDuffie County	Bridge ID 189-5015-0/Middle Creek	3	395,600	2010	7,512		Government, Water/Sewer	Transportation	2	2
McDuffie County	McDuffie County Fire Department Station 06	3	800,000	2020	3,384	\$ 650,000	Emergency Services, Emergency Services, Fire Fighters, Fire Fighters	Essential, Important	2	2
Thomson city	Bohler Street Water Tower	1	315,500	2010	1		Government, Water/Sewer	Essential, Lifeline	2	2
McDuffie County	Bridge ID 189-5001-0/Greenbrier Creek	1	50,000	2010	576		Government, Government, Water/Sewer, Water/Sewer	Essential, Transportation	2	2
Thomson city	City of Thomas Wastewater Holding Tank	1	75,000	2016	814	\$ 6,500	Government, Government, Water/Sewer, Water/Sewer	Essential, Hazardous Materials, Important, Lifeline	2	2
Thomson city	City of Thomson Wastewater Pumphouse	1	15,000	2016	104	\$ 17,000	Government, Government, Water/Sewer, Water/Sewer	Essential, Important, Lifeline	2	2
Thomson city	Clark Hill Pump Station	1	200,000	2016	1,652	\$ 155,000	Government, Government, Water/Sewer, Water/Sewer	Essential, Important, Lifeline	0	2
Thomson city	CrossRoads Learning Center	1	2,500,000	2016	11,790	\$ 300,000	Medical, Medical, Hospital, Hospital	Important	105	2
Dearing town	Dearing City Hall	1	125,000	2016	1,000	\$ 15,000	Private	Essential, Important	2	2
McDuffie County	Dearing Elementary School	1	4,500,000	2016	60,528	\$ 850,000	Emergency Services, Emergency Services, Fire Fighters, Fire Fighters	Essential, Important, Special Consideration, Vulnerable Population	545	2

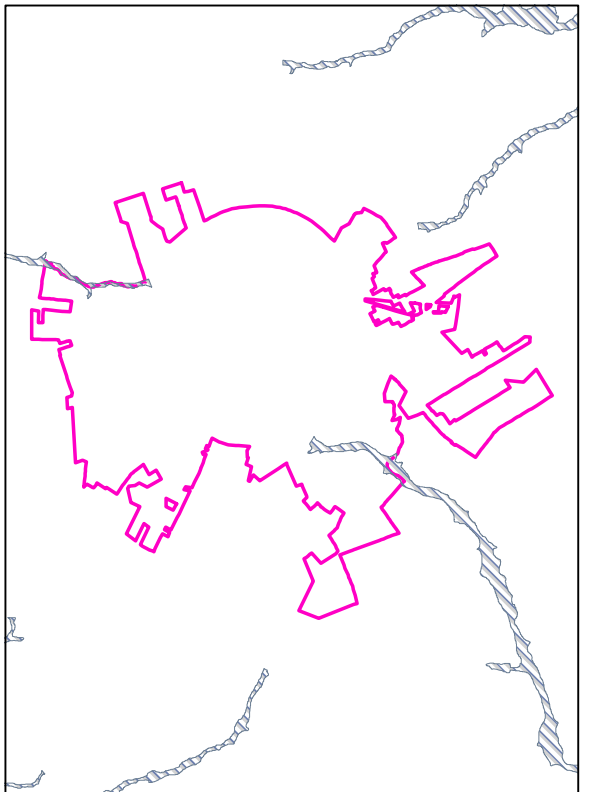
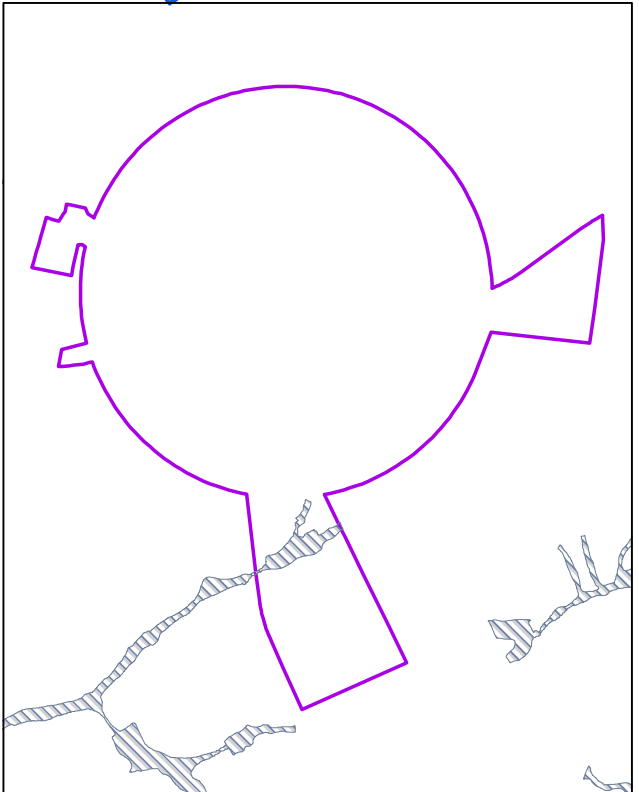
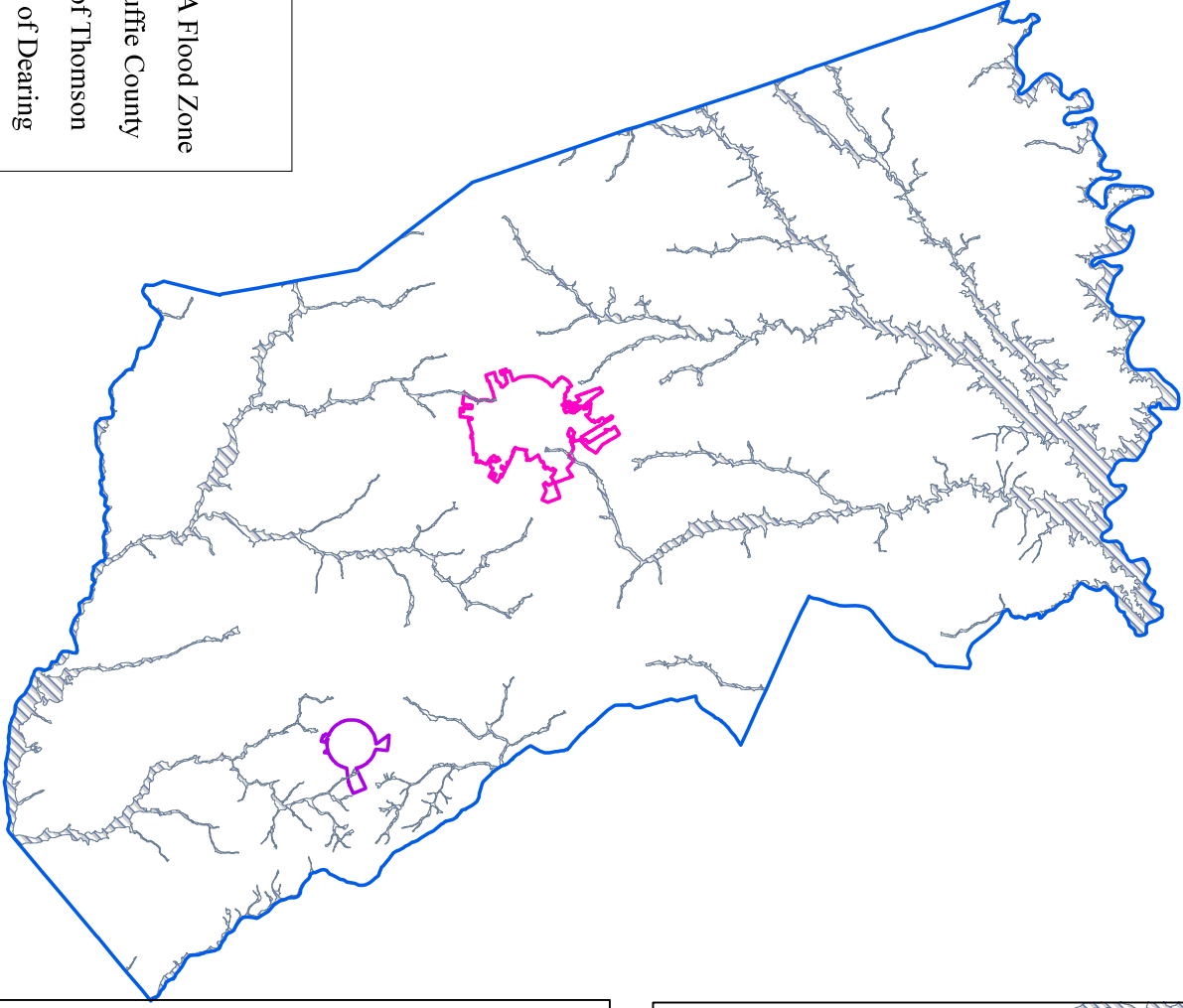
Dearing town	Dearing Fire Station 2	1	150,000	2016	810	\$	250,000	Emergency Services, Emergency Services, Fire Fighters, Fire Fighters	Essential, Lifeline	2	2
Thomson city	Dearing Water Tower	1	220,000	2016	1			Government, Government, Water/Sewer, Water/Sewer	Essential, Important, Lifeline	2	2
Thomson city	Department of Family and Children Services	1	950,000	2016	7,800	\$	750,000	Government, Government, Water/Sewer, Water/Sewer	Essential, Important, Vulnerable Population	45	2
Thomson city	Lumpkin Street Water Tower	1	285,000	2016	1			Government, Government, Water/Sewer, Water/Sewer	Essential, Important, Lifeline	2	2
McDuffie County	McDuffie County Board of Education	1	900,000	2016	9,644	\$	425,000	Government, Government, Water/Sewer, Water/Sewer	Essential, Important	25	2
McDuffie County	McDuffie County Courthouse	1	1,750,000	2016	6,500	\$	850,000	Law Enforcement, Law Enforcement, Court House, Court House	Essential, Important	25	2
McDuffie County	McDuffie County Health Department	1	600,000	2016	5,253	\$	850,000	Government, Government, Private, Private	Essential, Important, Vulnerable Population	45	2
Dearing town	Old Gym	1	455,000	2016	6,409	\$	15,000	Emergency Services, Emergency Services, Fire Fighters, Fire Fighters	Important	2	2
Thomson city	Senior Citizens Center	1	1,200,000	2016	7,700	\$	750,000	Government, Government, Private, Private	Essential, Vulnerable Population	250	0
McDuffie County	Sheriff's Office - Substation	1	250,000	2016	1,000	\$	10,000	Law Enforcement, Law Enforcement, Sheriff, Sheriff	Essential	2	2
Thomson city	Thomson City Hall	1	450,000	2016	4,446	\$	175,000	Government, Government, Private, Private	Essential	12	0
McDuffie County	Thomson Elementary School	1	5,500,000	2016	60,850	\$	1,250,000	Government, Government, Private, Private	Essential, Important	661	2
McDuffie County	Thomson Middle School	1	8,500,000	2016	133,700	\$	1,750,000	Law Enforcement, Law Enforcement, Sheriff, Sheriff	Essential, Important, Special Consideration	653	2
Thomson city	Thomson Police Department Substation	1	185,000	2016	2,479	\$	15,000	Law Enforcement, Law Enforcement, Police, Police	Essential, Important	2	2
Thomson city	Thomson Public Works Gas & Diesel Pump	1	20,000	2016	200	\$	50,000	Government, Government, Water/Sewer, Water/Sewer	Essential, Important, Lifeline	2	2
Thomson city	Thomson Public Works Gas Office	1	12,000	2016	192	\$	8,000	Government, Government, Water/Sewer, Water/Sewer	Essential, Hazardous Materials, Important, Lifeline	2	2
Thomson city	Thomson Public Works Maintenance Shop	1	350,000	2016	6,732	\$	275,000	Government, Government, Water/Sewer, Water/Sewer	Essential, Important, Lifeline	2	2
Thomson city	Thomson Public Works Office	1	110,000	2016	1,066	\$	35,000	Government, Government, Water/Sewer, Water/Sewer	Essential, Important, Lifeline	5	2
Thomson city	Thomson Public Works Storage	1	250,000	2016	6,450	\$	15,000	Government, Government, Water/Sewer, Water/Sewer	Essential, Important, Lifeline	2	2

Thomson city	Thomson WPCP	1	1,650,000	2016	2,931	\$ 450,000	Government, Government, Water/Sewer, Water/Sewer	Essential, Hazardous Materials, Lifeline	2	2
McDuffie County	Thomson-McDuffie County Library	1	1,500,000	2016	13,500	\$ 1,000,000	Education, Education, Library, Library	Essential, Important	300	300
McDuffie County	Thomson-McDuffie Government Complex	1	15,000,000	2016	70,000	\$ 1,500,000	Government, Government, Water/Sewer, Water/Sewer	Essential	2	2
Thomson city	Augusta Highway Water Tower	0	300,000	2010	1		Government, Water/Sewer	Essential, Lifeline	2	2
McDuffie County	Bridge ID 189-0025-0/Fort Creek	0	65,000	2010	576		Government, Government, Water/Sewer, Water/Sewer	Essential, Transportation	2	2
McDuffie County	Bridge ID 189-0029-0/Sweetwater Creek	0	75,000	2010	888		Government, Government, Water/Sewer, Water/Sewer	Essential, Transportation	2	2
McDuffie County	Bridge ID 189-5006-0/Whites Creek	0	70,600	2010	1,032		Government, Water/Sewer	Transportation	2	2
Thomson city	City of Thomson Water Filter Plant	0	1,250,000	2016	12,316	\$ 450,000	Government, Government, Water/Sewer, Water/Sewer	Essential, Important, Lifeline	2	2
Thomson city	City of Thomson Water Filter Plant/Clear Well	0	250,000	2016	2,704		Government, Government, Water/Sewer, Water/Sewer	Essential, Important, Lifeline	2	2
	Dearing Wastewater Treatment Facility	0	350,000	2016	684	\$ 75,000	Government, Government, Water/Sewer, Water/Sewer	Essential, Hazardous Materials, Important, Lifeline	2	2
Thomson city	Ferrous Road Water Tower	0	550,000	2016	1		Government, Government, Water/Sewer, Water/Sewer	Essential, Important, Lifeline	2	2
Dearing town	Fire Station #1	0	350,000	2016	2,400	\$ 500,000	Emergency Services, Emergency Services, Fire Fighters, Fire Fighters		0	0
McDuffie County	J.A. Maxwell Elementary School	0	5,250,000	2016	58,396	\$ 125,000	Emergency Services, Emergency Services, Fire Fighters, Fire Fighters	Essential, Important, Special Consideration	529	0
McDuffie County	McDuffie Co. Solid Waste Scales & Scalehouse	0	120,000	2016	1,500	\$ 35,000	NGO, NGO, Water/Sewer, Water/Sewer	Essential	2	2
McDuffie County	McDuffie Co. Solid Waste Transfer Station	0	165,000	2016	2,300	\$ 180,000	Education, Education, K - 12, K - 12	Essential	2	2
McDuffie County	McDuffie County Animal Shelter	0	130,000	2016	1,590	\$ 90,000	Government, Government, Private, Private	Important, Vulnerable Population	3	1
McDuffie County	McDuffie County Fire Department Station 05	0	800,000	2020	2,863	\$ 700,000	Emergency Services, Emergency Services, Fire Fighters, Fire Fighters	Essential, Important	2	2
McDuffie County	McDuffie County Fire Dept Station 01	0	1,500,000	2019	3,310	\$ 1,250,000	Emergency Services, Emergency Services, Fire Fighters, Fire Fighters	Essential, Important	10	6
McDuffie County	McDuffie County Fire Station #3	0	800,000	2020	2,520	\$ 450,000	Emergency Services, Emergency Services, Fire Fighters, Fire Fighters	Essential, Lifeline	2	2
McDuffie County	McDuffie County Fire Station #4	0	850,000	2020	2,400	\$ 1,350,000	Emergency Services, Emergency Services, Fire Fighters, Fire Fighters	Essential, Lifeline	0	0

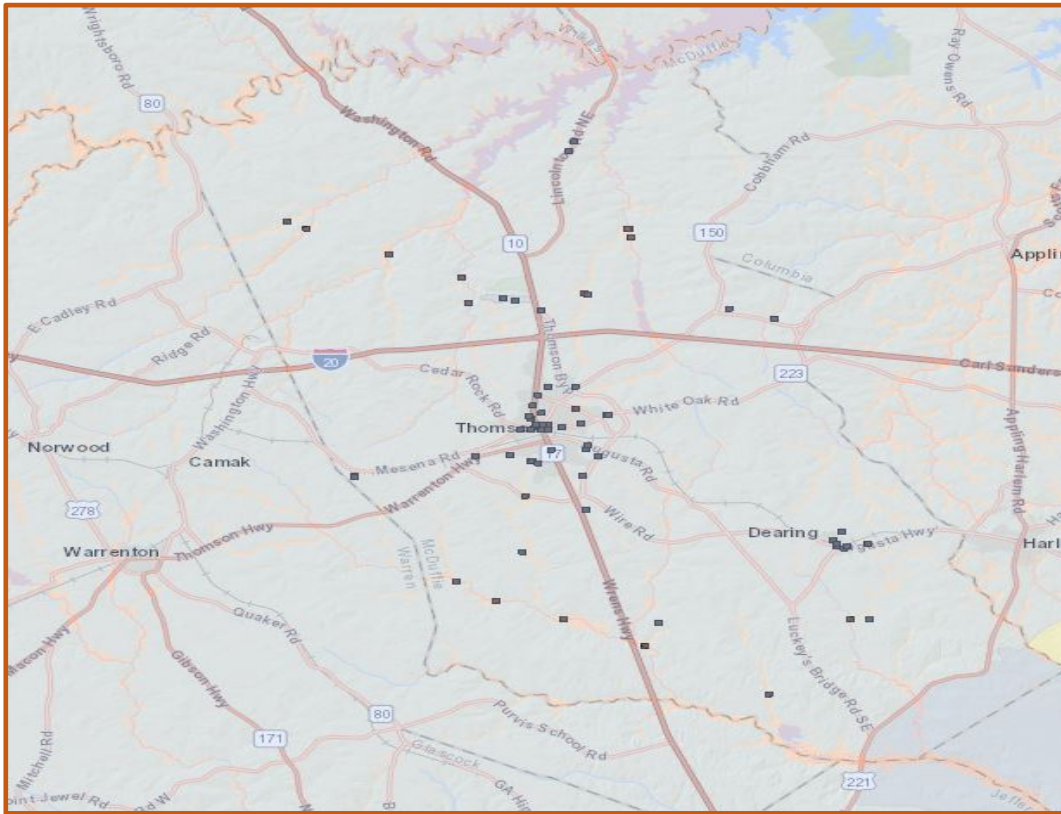
McDuffie County	McDuffie County Fire Station 2	0	1,500,000	2020	6,212	\$ 1,000,000	Emergency Services, Emergency Services, Fire Fighters, Fire Fighters	Essential, Lifeline	4	4
McDuffie County	McDuffie County Sheriff's Office	0	750,000	2016	2,000	\$ 300,000	Law Enforcement, Law Enforcement, Sheriff, Sheriff	Essential	15	10
McDuffie County	Norris Elementary School	0	7,500,000	2016	89,611	\$ 1,500,000	Government, Government, Private, Private	Essential, Important	555	0
Thomson city	Norris Lift Station	0	100,000	2016	140		Government, Government, Water/Sewer, Water/Sewer	Essential, Hazardous Materials, Important		
McDuffie County	SweetWater Gymnasium	0	2,475,000	2016	23,000	\$ 350,000	Emergency Services, Emergency Services, Fire Fighters, Fire Fighters	Essential, Important	150	
McDuffie County	Thomson High School	0	9,500,000	2016	181,588	\$ 2,200,000	Medical, Medical, Hospital, Hospital	Essential, Important	1003	
McDuffie County	Thomson Land Application System	0	3,000,000	2016	2,000		Government, Government, Water/Sewer, Water/Sewer	Essential, Hazardous Materials	2	
Thomson city	Thomson Police Department	0	500,000	2016	2,000	\$ 250,000	Law Enforcement, Law Enforcement, Police, Police	Essential, Important	18	8
McDuffie County	Thomson-McDuffie Airport	0	9,000,000	2016	11,253	\$ 1,500,000	NGO, NGO, Transportation, Transportation	Economic Assets, Essential, Transportation	10	
Thomson city	Thomson-McDuffie Co Water Treatment Plant	0	522,600	2016	8,820	\$ 85,000	Government, Government, Water/Sewer, Water/Sewer	Essential, Important	2	2
Thomson city	Thomson-McDuffie Fire Department Station 07	0	850,000	2020	5,472	\$ 1,350,000	Emergency Services, Emergency Services, Fire Fighters, Fire Fighters	Essential, Important, Lifeline	5	4
McDuffie County	Thomson-McDuffie Jr. High	0	8,500,000	2016	165,225	\$ 2,500,000	Emergency Services, Emergency Services, Fire Fighters, Fire Fighters	Essential, Vulnerable Population	673	
McDuffie County	UNiversity Medical Regional McDuffie	0	7,000,000	2016	25,000	\$ 5,000,000	Medical, Medical, Hospital, Hospital		300	185
Thomson city	Warrenton Highway Water Tower	0	350,000	2016	1		Government, Government, Water/Sewer, Water/Sewer	Essential, Important, Lifeline		
			115,474,055			\$ 33,656,500			5978	528

Legend

-  FEMA Flood Zone
-  McDuffie County
-  City of Thomson
-  Town of Dearing



MCDUFFIE COUNTY FLOOD ZONES FROM GEORGIA MITIGATION INFORMATION SYSTEM



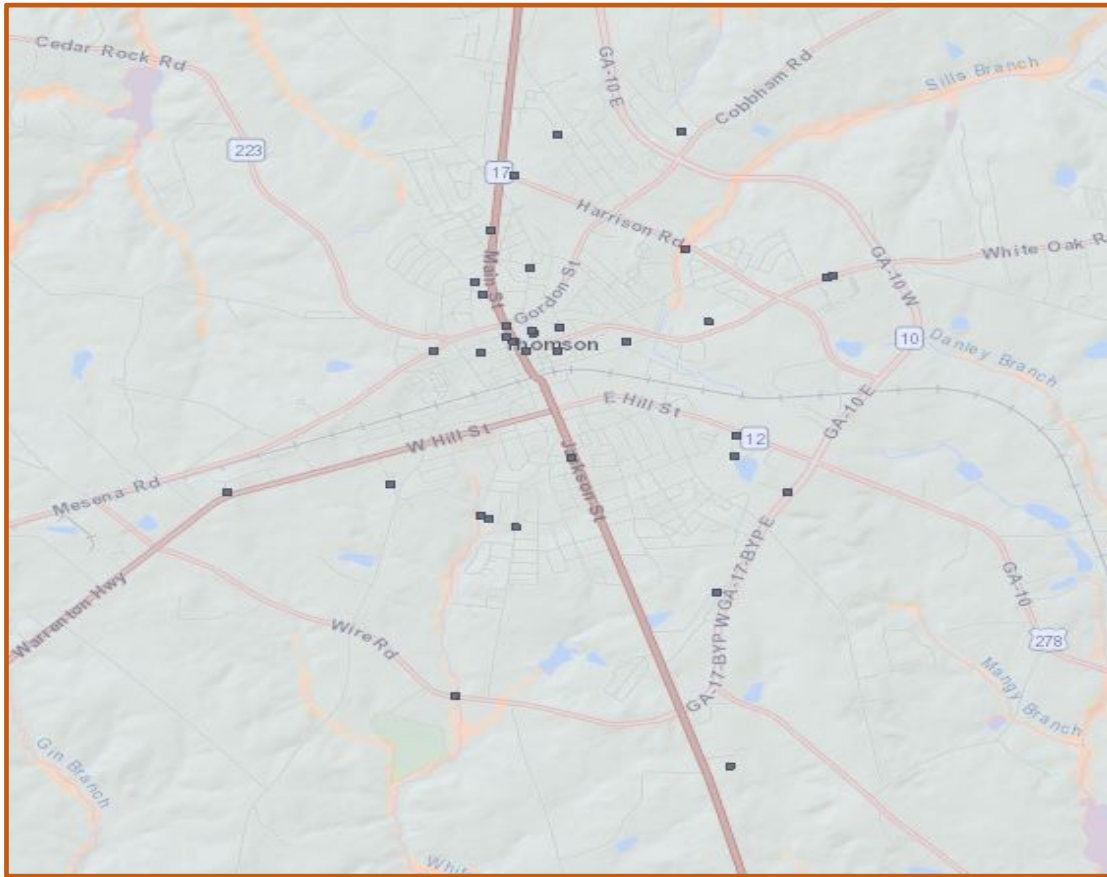
Score	Original Value	Description
4	Floodway	Floodway (within zone AE)
	V	1% with Velocity no Base Flood Elevation (BFE)
	VE	1% with Velocity BFE
3	A	1% Annual Chance no BFE
	A99	1% Federal flood protection system
	AE	1% has BFE
	AH	1% Ponding has BFE
	AO	1% Sheet Flow has depths
2	AR	1% Federal flood protection system
	X500	0.2% Annual Chance
1	ANI	Area not included in survey
	D	Undetermined but possible
0	UNDES	Undesignated
	X	Outside Flood Zones

DEARING, GA FLOOD ZONES FROM GEORGIA MITIGATION INFORMATION SYSTEM



Score	Original Value	Description
4	Floodway	Floodway (within zone AE)
	V	1% with Velocity no Base Flood Elevation (BFE)
	VE	1% with Velocity BFE
3	A	1% Annual Chance no BFE
	A99	1% Federal flood protection system
	AE	1% has BFE
	AH	1% Ponding has BFE
	AO	1% Sheet Flow has depths
2	AR	1% Federal flood protection system
2	X500	0.2% Annual Chance
1	ANI	Area not included in survey
	D	Undetermined but possible
0	UNDES	Undesignated
	X	Outside Flood Zones

THOMSON, GA FLOOD ZONES FROM GEORGIA MITIGATION INFORMATION SYSTEM



Score	Original Value	Description
4	Floodway	Floodway (within zone AE)
	V	1% with Velocity no Base Flood Elevation (BFE)
	VE	1% with Velocity BFE
3	A	1% Annual Chance no BFE
	A99	1% Federal flood protection system
	AE	1% has BFE
	AH	1% Ponding has BFE
	AO	1% Sheet Flow has depths
2	AR	1% Federal flood protection system
	X500	0.2% Annual Chance
1	ANI	Area not included in survey
	D	Undetermined but possible
0	UNDES	Undesignated
	X	Outside Flood Zones

DROUGHT

Drought is a normal, recurrent feature of climate consisting of a deficiency of precipitation over an extended period of time (usually a season or more). This deficiency results in a water shortage for some social or environmental sector. Drought should be judged relative to some long-term average condition of balance between precipitation and evapotranspiration in a particular area that is considered "normal." Drought should not be viewed as only a natural hazard because the demand people place on water supply affects perceptions of drought conditions. The impacts of drought are vast, including limited water supplies in urban areas to insufficient water for farmland.

Drought is not spatially defined and equally affects the entire planning area. Droughts do not have the immediate effects of other natural hazards, but sustained drought can cause severe economic stress to not only the agricultural interests in McDuffie County, but to the entire State of Georgia. The potential negative effects of sustained drought are numerous. Based on a 20-year cycle hazard history there is a 120 percent chance of an annual drought event in McDuffie County. In addition to an increased threat of wildfires, drought can affect private wells, municipal and industrial water supplies, stream-water quality, water recreation facilities, hydro-power generation, as well as agricultural and forest resources.

In McDuffie County there are 2,972 agricultural/forestry properties valued at approximately \$317 million and include 6,381 heads of cattle and an estimated population of 280 that have the greatest potential to be damaged by drought. There is a population of 21,455 and approximately 32,429 structures/properties in the county with a value of nearly \$1.9 billion, which could be affected if wildfires break out due to drought conditions. Drought mitigation goals and objectives are in Chapter III, Section III.

MapDate	D0	D1	D2	D3	D4
20201229	82.64				
20201222	82.64				
20201215	82.64				
20201208	82.64				
20201201	81.87				
20201124	81.87				
20200804	0.75				
20200728	1.87				
20200721	1.87				
20191210	33.81				
20191203	26.17				
20191126	63.79	2.23			
20191119	63.79	2.23			
20191112	100	46.75			
20191105	100	100			
20191029	100	100	50.88		
20191022	100	100	50.88		
20191015	100	100	86.96		
20191008	100	100			
20191001	100				
20190924	100				
20190611	100				
20190604	100	100			
20190528	100				
20190521	100				
20190514	100				
20190507	100				
20190430	100				
20190423	100				
20190416	100				
20190409	100				
20190402	100				
20190326	100				
20190319	78.6				
20190312	78.6				
20181023	8.91				
20181016	8.91				
20181009	12.53				
20181002	12.53				
20180522	100				
20180515	100	100			
20180508	100	100			
20180501	100	11.37			
20180424	100	11.37			
20180417	100	100			
20180410	100	100			

20180403	100				
20180327	100				
20180320	100				
20180313	100	98.67			
20180306	100	43.72			
20180227	86.14				
20180220	86.14				
20180213	23.61				
20180206	100				
20180130	100				
20180123	100	13.1			
20180116	100	13.1			
20180109	100	13.1			
20180102	100	13.1			
20171226	100	13.1			
20171219	100	99.7			
20171212	100	99.7			
20171205	100	99.7			
20171128	100	71.94			
20171121	100	58.99			
20171114	100	58.99			
20171107	100				
20171031	100				
20171024	100				
20171017	100				
20170905	2.31				
20170829	10.72				
20170627	100				
20170620	10.76				
20170613	10.76				
20170606	10.76				
20170530	10.93				
20170523	100				
20170516	100				
20170509	100				
20170502	100				
20170425	100				
20170418	100				
20170411	95.16				
20170404	95.16	19.17			
20170328	95.16	19.17			
20170321	76.42	19.17			
20170314	40.09	2.39			
20170307	39.9	2.39			
20170228	39.9	2.39			
20170221	39.9	2.39			
20170214	39.9	2.39			

20170207	80.07	2.39			
20170131	80.07	2.39			
20170124	80.07	2.39			
20170117	100	81.4			
20170110	100	81.4			
20170103	100	100	2.9		
20161227	100	100	100	93.16	0.27
20161220	100	100	100	93.16	0.27
20161213	100	100	100	93.16	0.27
20161206	100	100	100	93.16	0.27
20161129	100	100	100	88.9	
20161122	100	100	92.04	41.8	
20161115	100	100	78.84	14	
20161108	100	100	16.86		
20161101	100	100	16.86		
20161025	100	100	16.86		
20161018	100	100	16.86		
20161011	100	82.63	0.3		
20161004	83.26	1.45			
20160927	83.73	1.26			
20160920	69.3				
20160913	69.3				
20160906	69.3				
20160830	100	8.73			
20160823	100	8.73			
20160816	100	2.08			
20160809	100	2.08			
20160802	100	2.08			
20160726	100				
20160719	100				
20160712	98.66				
20160705	98.66				
20160628	98.66				
20160621	99.23				
20160614	99.23				
20160607	67.18				
20160531	67.18				
20160524	67.18				
20160517	67.18				
20160510	25.82				
20160503	29.53				
20160405	100				
20160329	99.33				
20160322	41.98				
20131224	42.49				
20131217	100				
20131210	100				

20131203	100				
20131126	100				
20131119	100				
20131112	100				
20131105	100				
20131029	100				
20131022	100				
20130430	100				
20130423	100				
20130416	100				
20130409	100	0.1			
20130402	100	100			
20130326	100	100	100		
20130319	100	100	100		
20130312	100	100	100		
20130305	100	100	100		
20130226	100	100	100		
20130219	100	100	100	100	
20130212	100	100	100	100	
20130205	100	100	100	100	
20130129	100	100	100	100	
20130122	100	100	100	100	
20130115	100	100	100	100	
20130108	100	100	100	100	
20130101	100	100	100	100	
20121225	100	100	100	100	
20121218	100	100	100	100	
20121211	100	100	100	100	
20121204	100	100	100	100	
20121127	100	100	100	77.33	
20121120	100	100	99.96	77.33	
20121113	100	100	98.35	3.39	
20121106	100	100	100	3.27	
20121030	100	100	100		
20121023	100	100	100		
20121016	100	100	100		
20121009	100	100	100		
20121002	100	100	100		
20120925	100	100	100		
20120918	100	100	100		
20120911	100	100	100		
20120904	100	100	100	2.94	
20120828	100	100	100	100	
20120821	100	100	100	100	
20120814	100	100	100	100	
20120807	100	100	100	100	100
20120731	100	100	100	100	100

20120724	100	100	100	100	100
20120717	100	100	100	100	100
20120710	100	100	100	100	100
20120703	100	100	100	100	100
20120626	100	100	100	100	100
20120619	100	100	100	100	32.5
20120612	100	100	100	100	30.32
20120605	100	100	100	100	31.14
20120529	100	100	100	100	53.93
20120522	100	100	100	100	53.93
20120515	100	100	100	100	53.93
20120508	100	100	100	100	
20120501	100	100	100	100	
20120424	100	100	100	100	
20120417	100	100	100	100	
20120410	100	100	100	100	
20120403	100	100	100	100	
20120327	100	100	100	100	
20120320	100	100	100	100	
20120313	100	100	100	100	
20120306	100	100	100	100	
20120228	100	100	100	100	
20120221	100	100	100	100	
20120214	100	100	100	100	
20120207	100	100	100	100	
20120131	100	100	100	100	
20120124	100	100	100	100	
20120117	100	100	100	100	
20120110	100	100	100	100	
20120103	100	100	100	100	
20111227	100	100	100	100	
20111220	100	100	100	100	
20111213	100	100	100	100	
20111206	100	100	100	100	
20111129	100	100	100	100	
20111122	100	100	100	100	
20111115	100	100	100	96.41	
20111108	100	100	100	96.41	
20111101	100	100	100	96.41	
20111025	100	100	100	100	
20111018	100	100	100	100	
20111011	100	100	100	100	
20111004	100	100	100	100	
20110927	100	100	100	100	
20110920	100	100	100	100	
20110913	100	100	100	100	
20110906	100	100	100	100	

20110830	100	100	100	90.36	
20110823	100	100	100	90.36	
20110816	100	100	100	90.36	
20110809	100	100	100	99.69	
20110802	100	100	100	99.69	
20110726	100	100	100	99.69	
20110719	100	100	100	99.69	
20110712	100	100	100	99.69	
20110705	100	100	100	99.69	
20110628	100	100	100	99.69	
20110621	100	100	99.48		
20110614	100	100	99.48		
20110607	100	100	99.48		
20110531	100	100			
20110524	100	100			
20110517	100	100			
20110510	100	42.65			
20110503	100	40.02			
20110426	100	40.02			
20110419	100	40.02			
20110412	100	40.02			
20110405	100	40.02			
20110329	100	23.88			
20110322	100	100			
20110315	100	100			
20110308	100	100			
20110301	100	100			
20110222	100	100			
20110215	100	100			
20110208	100	100			
20110201	100	100			
20110125	100	100			
20110118	100	100			
20110111	100	100			
20110104	100	100			
20101228	100	100			
20101221	100	100			
20101214	100	100			
20101207	100	100			
20101130	100	100			
20101123	100	100			
20101116	100	0.23			
20101109	100	0.23			
20101102	100	5.26			
20101026	100	12			
20101019	100	12			
20101012	100				

20101005	100				
20100928	100				
20100921	100	10.67			
20100810	84.43				
20100803	84.43				
20100727	100				
20100720	100				
20090915	85.4				
20090908	100				
20090901	100				
20090825	100				
20090818	100				
20090811	100				
20090804	100				
20090728	100				
20090721	100				
20090714	100				
20090707	100				
20090331	100				
20090324	100	9.9			
20090317	100	9.9			
20090310	100	9.9			
20090303	100	9.9			
20090224	100	100			
20090217	100				
20090210	100				
20090203	46.39				
20090127	45.85				
20090120	45.12				
20090113	45.12				
20090106	95.18	43.2			
20081230	95.18	43.2			
20081223	95.18	43.2			
20081216	95.18	43.2			
20081209	100	100	95.86	39.12	
20081202	100	100	100	94.12	
20081125	100	100	100	94.12	
20081118	100	100	100	94.12	
20081111	100	100	100	100	
20081104	100	100	100	100	
20081028	100	100	100	100	
20081021	100	100	100	100	
20081014	100	100	100	100	
20081007	100	100	100	100	
20080930	100	100	100	100	
20080923	100	100	100	8.93	
20080916	100	100	100	8.93	

20080909	100	100	100	8.93	
20080902	100	100	100	8.93	
20080826	100	100	100	8.93	
20080819	100	100	100	83.59	
20080812	100	100	100	99.2	
20080805	100	100	100	27.29	
20080729	100	100	100	27.29	
20080722	100	100	100	27.29	
20080715	100	100	100	27.29	
20080708	100	100	100	27.29	
20080701	100	100	100	27.29	
20080624	100	100	24.68		
20080617	100	100	14.78		
20080610	100	100	0.39		
20080603	100	100			
20080527	100	100			
20080520	100	100	3.2		
20080513	100	100	3.2		
20080506	100	100	3.2		
20080429	100	100	3.2		
20080422	100	100	3.2		
20080415	100	100	3.2		
20080408	100	100	3.2		
20080401	100	100	3.2		
20080325	100	100	3.2		
20080318	100	100	3.2		
20080311	100	100	3.2		
20080304	100	100	100		
20080226	100	100	100		
20080219	100	100	100	61.83	
20080212	100	100	100	61.83	
20080205	100	100	100	61.83	
20080129	100	100	100	61.83	
20080122	100	100	100	61.83	
20080115	100	100	100	100	
20080108	100	100	100	100	
20080101	100	100	100	100	
20071225	100	100	100	100	100
20071218	100	100	100	100	100
20071211	100	100	100	100	100
20071204	100	100	100	100	78.61
20071127	100	100	100	100	27.85
20071120	100	100	100	100	27.85
20071113	100	100	100	100	27.85
20071106	100	100	100	79.99	
20071030	100	100	100	79.99	
20071023	100	100	100	79.99	

20071016	100	100	100	79.99	
20071009	100	100	100	34.01	
20071002	100	100	55.34		
20070925	100	100	55.34		
20070918	100	100	55.34		
20070911	100	100	100		
20070904	100	100	100		
20070828	100	100	100	16.48	
20070821	100	100	100	21.91	
20070814	100	100	37.6		
20070807	100	100	15.85		
20070731	100	10.84			
20070724	100	10.84			
20070717	100	10.84			
20070710	100	10.84			
20070703	100	10.84			
20070626	100	36.83			
20070619	100	36.83			
20070612	100	36.83			
20070605	100	36.83			
20070529	100	100			
20070522	100	100			
20070515	100	100			
20070508	100	100			
20070501	100	100			
20070424	100	100			
20070417	100				
20070410	100				
20070403	100				
20070327	100				
20070320	90.91				
20070313	4.26				
20070227	100				
20070220	100				
20070109	94.82				
20070102	94.82				
20061226	94.82				
20061219	94.82				
20061212	94.16				
20061121	88.14				
20061114	100	48.31			
20061107	100	45.5			
20061031	100	45.5			
20061024	100	100			
20061017	100	100			
20061010	100	100			
20061003	100	100			

20060926	100			
20060919	100			
20060912	100	100		
20060905	100	100		
20060829	100	100		
20060822	100	100		
20060815	100	100		
20060808	100	100		
20060801	100	100		
20060725	100	100		
20060718	100	19.48		
20060711	100	11.01		
20060704	100	29.45		
20060627	100	28.78		
20060620	100	28.78		
20060613	100	100		
20060606	100	100		
20060530	100	0.37		
20060523	100	0.37		
20060516	100	0.37		
20060509	100			
20060502	100			
20060425	100			
20060418	100			
20060411	100			
20060404	100			
20051122	36.13			
20051115	57.4			
20050927	100			
20040824	100			
20040817	69.85			
20040810	100			
20040803	100			
20040727	100			
20040720	100			
20040713	100			
20040706	100	63.32		
20040629	100	100		
20040622	100	100	60.9	
20040615	100	100	100	
20040608	100	100	100	
20040601	100	100	100	
20040525	100	100	100	
20040518	100	100		
20040511	100	100		
20040504	100	100		
20040427	100	100		

20040420	100				
20040413	100				
20040406	100				
20040330	100				
20040323	100				
20030318	4.18				
20030311	6.66				
20030304	34.12				
20030225	63.17				
20030218	57.03				
20030211	42.51				
20030204	59.88				
20030128	1.19				
20030121	0.42				
20030114	1.02				
20030107	3.55				
20021231	0.27				
20021224	100				
20021217	100				
20021210	100	100			
20021203	100	100			
20021126	100	100			
20021119	100	100			
20021112	100	100			
20021105	100	100	100		
20021029	100	100	100		
20021022	100	100	100		
20021015	100	100	100		
20021008	100	100	100		
20021001	100	100	100		
20020924	100	100	100		
20020917	100	100	100	100	
20020910	100	100	100	100	100
20020903	100	100	100	100	100
20020827	100	100	100	100	100
20020820	100	100	100	100	100
20020813	100	100	100	100	100
20020806	100	100	100	100	
20020730	100	100	100	100	
20020723	100	100	100	100	
20020716	100	100	100	82.69	
20020709	100	100	100	89.54	
20020702	100	100	100	70.37	
20020625	100	100	100	84.23	
20020618	100	100	100	1.36	
20020611	100	100	100		
20020604	100	100	100		

20020528	100	100	100		
20020521	100	100	100	100	
20020514	100	100	100	100	
20020507	100	100	100	100	
20020430	100	100	100	100	
20020423	100	100	100		
20020416	100	100	100		
20020409	100	100	100	83.47	
20020402	100	100	100	90.85	
20020326	100	100	100	100	
20020319	100	100	100	100	
20020312	100	100	100	100	
20020305	100	100	100	100	
20020226	100	100	100	100	
20020219	100	100	100	100	
20020212	100	100	100	100	
20020205	100	100	100	100	
20020129	100	100	100	69.2	
20020122	100	100	100	62.84	
20020115	100	100	100	57.19	
20020108	100	100	100	100	
20020101	100	100	100	100	
20011225	100	100	100	0.86	
20011218	100	100	100	0.86	
20011211	100	100	100		
20011204	100	100	100		
20011127	100	100	100		
20011120	100	100	100		
20011113	100	100	100		
20011106	100	100	100		
20011030	100	100	100		
20011023	100	100			
20011016	100	100			
20011009	100	100			
20011002	100	100			
20010925	100				
20010918	100				
20010911	100				
20010904	100				
20010828	100				
20010821	90.72				
20010814	91.71				
20010807	100				
20010731	100				
20010724	100				
20010717	100				
20010710	100				

20010703	100				
20010626	100				
20010619	100	100			
20010612	100	100	100		
20010605	100	100	100		
20010529	100	100	100		
20010522	100	100	100		
20010515	100	100	100		
20010508	100	100	0.48		
20010501	100	100			
20010424	100	100			
20010417	100	100			
20010410	100	100			
20010403	100	100			
20010327	100	100			
20010320	100	100			
20010313	100	100			
20010306	100	100	35.91		
20010227	100	100	53.36		
20010220	100	100	53.36		
20010213	100	100	61.07		
20010206	100	100	61.07		
20010130	100	100	61.08		
20010123	100	100	61.08		
20010116	100	100	5.86		
20010109	100	100	5.86		
20010102	100	100	51.36		
20001226	100	100			
20001219	100	100			
20001212	100	100	100		
20001205	100	100	100		
20001128	100	100	100		
20001121	100	100	100		
20001114	100	100	100	11.2	
20001107	100	100	100	11.4	
20001031	100	100	100	11.4	
20001024	100	100	100		
20001017	100	100	100		
20001010	100	100	100		
20001003	100	100	100		
20000926	100	100	100		
20000919	100	100	100	100	
20000912	100	100	100	100	
20000905	100	100	100	100	
20000829	100	100	100	100	38.58
20000822	100	100	100	100	38.6
20000815	100	100	100	100	38.69

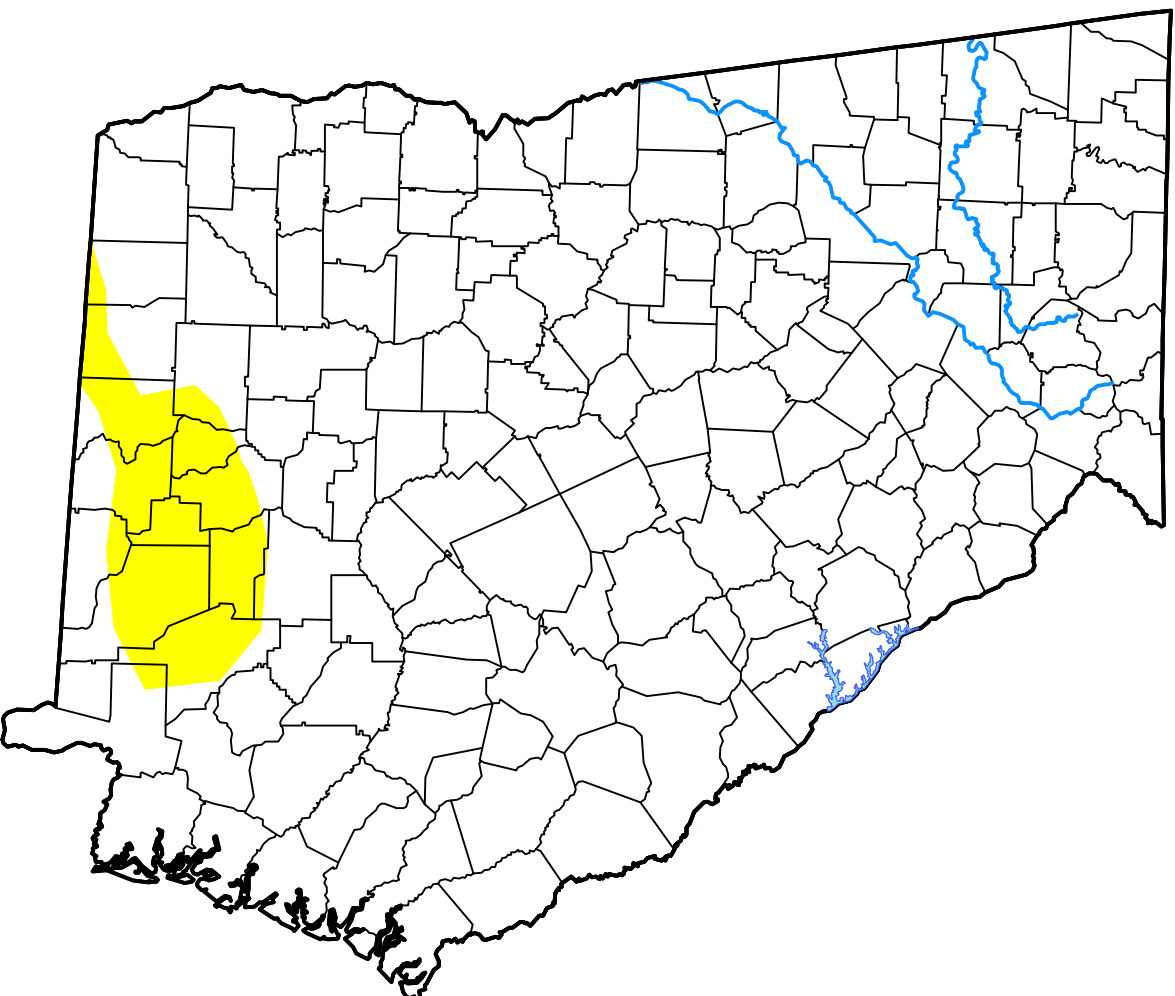
20000808	100	100	100	100	38.71
20000801	100	100	100	100	100
20000725	100	100	100	100	100
20000718	100	100	100	100	99.98
20000711	100	100	100	100	100
20000704	100	100	100	100	100
20000627	100	100	100	100	13.5
20000620	100	100	100	100	4.04
20000613	100	100	100	100	15.04
20000606	100	100	100	100	
20000530	100	100	100	100	
20000523	100	100	100		
20000516	100	100	100		
20000509	100	100			
20000502	100	100			
20000425	100	100			
20000418	100	100	5.29		
20000411	100	100			
20000404	100	100			
20000328	100	100			
20000321	100	100			
20000314	100	100			
20000307	100	100			
20000229	100	100			
20000222	100	100			
20000215	100	100			
20000208	100	100			
20000201	100	100			
20000125	100	100			
20000118	100	100			
20000111	100	100			
20000104	100				
	674	470	287	187	41

U.S. Drought Monitor Georgia

June 22, 2021

(Released Thursday, Jun. 24, 2021)

Valid 8 a.m. EDT



Intensity:

-  None
-  D0 Abnormally Dry
-  D1 Moderate Drought
-  D2 Severe Drought
-  D3 Extreme Drought
-  D4 Exceptional Drought

The Drought Monitor focuses on broad-scale conditions. Local conditions may vary. For more information on the Drought Monitor, go to <https://droughtmonitor.unl.edu/About.aspx>

Author:

Curtis Riganiti
National Drought Mitigation Center



WILDFIRE

A wildfire is any uncontrolled fire occurring on undeveloped land that needs fire suppression. The potential for wildfire is influenced by three factors: the presence of fuel, the area's topography and air mass. There are three different classes of wildland fires. A surface fire is the most common type and burns along the floor of a forest, moving slowly and killing or damaging trees. A ground fire is usually started by lightning and burns on or below the forest floor. Crown fires spread rapidly by wind and move quickly by jumping along the tops of trees. Wildfires are usually signaled by dense smoke that fills the area for miles around. Wildfires by lightning have a very strong probability of occurring during drought conditions. Drought conditions make natural fuels (grass, brush, trees, dead vegetation) more fire-prone.

McDuffie County's consist of 266 square miles with 8.9 of these miles being water. The county is comprised of 170,373 acres with 37,989 (22.3 percent) acres dedicated to agricultural and 90,141 (54.2 percent) acres dedicated to forestry. Given the right weather conditions and variables, wildfire due to natural causes creates a potential threat to the lives and property of residents in the planning area. According to Georgia Forestry data, from 1957 to 2018, there have been 2,272 fire events burning a total of 11,131 acres. Based on a 20-year hazard cycle there is a 3,695 percent chance of an annual wildfire due to a natural hazard event.

The GMIS has five facilities with a hazard score of four (high), 40 with a hazard score of three (moderate), seven with a hazard score of two (low), and 14 with a hazard score of one. The remaining ten critical facilities have a hazard score of zero. The 66 facilities with a hazard score greater than zero have an estimated potential loss of more than \$113 million. The replacement value for all critical facilities is approximately \$115,474,055.

ACRES BURNED

Year	TOTAL	LIGHT	MACHI	CAMP	SMOKE	DEBRI	ARSON	RAIL	CHILD
1957	0	0	0	0	0	0	0	0	0
1958	216.94	0	33	2.2	42.55	49.8	32.69	0	0
1959	326.75	0	7	5.7	56.15	73	0	12.7	0
1960	361.23	0	18	8.5	61.93	70.25	30.05	69	0
1961	484.05	0	1	25	49.4	131.3	28.75	43.9	0
1962	351.6	10	44.14	15.25	77.75	83.79	0	120.67	0
1963	399.8	0	83	0	68.2	23.25	0	225.35	0
1964	370.7	0	2.5	9	37	135	0	187.2	0
1965	233.7	0	51.2	0	64.1	53.05	2.8	62.55	0
1966	1464.3	0	40	17.75	21.6	98.15	1286	0.8	0
1967	88.98	0	5.75	35	20.65	2.5	25.08	0	0
1968	78.1	0	4.53	0	35.87	18.18	19.52	0	0
1969	71.08	0	10.07	4.53	15.09	26.87	14.52	0	0
1970	312.5	0	119.32	0	156.51	33.67	3	0	0
1971	68.79	0	0.2	0	9.05	47.1	12.44	0	0
1972	57.24	0	2.72	0	6.94	38.29	7.92	1.37	0
1973	69.18	0	12.31	0	20.33	8.72	18.03	9.79	0
1974	155.87	10.36	14.16	0	34.46	60.99	0	35.9	0
1975	61.14	0	10.27	0	1.18	15.15	8.63	23.41	0.5
1976	138.87	0	27.52	0	10.26	60.18	9.25	0	9.68
1977	355.23	0	6.62	0.6	274.52	49.11	0	0	12.3
1978	130.42	7.5	1.5	5.8	8.56	71.43	4.61	0	4.07
1979	85.86	5	6.59	0.25	6.96	60.5	0	0	0.65
1980	51.86	1.05	0	0	35.95	14.68	0	0	0
1981	84.02	0	2.19	0	10.26	38.94	8.29	0	2.64
1982	82.15	0	0	2.88	12.12	47.01	0.23	0	13.74
1983	133.45	0	0	0	9.4	39.5	10.25	0.1	49.57
1984	78.25	0.6	3.97	0	13.24	50.26	5.63	0	0.51
1985	302.62	253.31	3.35	0	6.45	25.87	3.11	0	0
1986	101.42	0.63	3.77	0	4.93	55.2	11.99	0	10.59
1987	115.21	8.34	4.61	1.43	1.14	84.6	4.66	0	2.31
1988	175.63	60.88	1	0	0.65	66.47	1.75	35.6	5.68
1989	77.92	25.63	12.21	0	1.29	16	1.27	0	0
1990	79.06	24.6	0.24	0	2.93	11.83	26.57	1.92	0.96
1991	227.6	0	165.33	0	1.34	41.52	1.32	0	1.33
1992	101.9	16.71	0.48	0.94	23.68	51.66	3.32	0	1.14
1993	100.48	26.19	2.39	1.45	7.33	38.86	17.49	0	0.46
1994	43.74	0	1.63	0	14.49	26.36	0	0	0.37
1995	82.95	0.01	9.84	0	2.59	66.53	0	0	1.08
1996	43.74	0	3.42	0	3.93	34.09	1.04	0	0.21
1997	64.41	0.01	0.29	0.94	0.22	54	0.11	0	1.81
1998	90.73	0.35	0	6.43	21.94	61.4	0	0	0
1999	48.69	0	0.41	3.58	0.63	41.6	0.82	0	0.03
1987	115.21	8.34	4.61	1.43	1.14	84.6	4.69	0	2.28
1988	175.63	60.88	1	0	0.65	66.47	1.75	35.6	5.68

1989	77.92	25.63	12.21	0	1.29	16	1.27	0	0
1990	79.06	24.6	0.24	0	2.93	11.58	27.24	1.92	0.54
1991	227.6	0	165.33	0	1.34	41.52	2.65	0	0
1992	101.9	16.71	0.48	0.94	23.68	51.66	3.32	0	1.14
1993	100.48	26.19	2.39	1.45	7.33	38.86	17.49	0	0.46
1994	43.74	0	1.63	0	14.49	26.36	0	0	0.37
1995	82.95	0.01	9.84	0	2.26	66.53	0.84	0	0.57
1996	43.74	0	3.42	0	3.93	34.09	1.25	0	0
1997	64.41	0.01	0.29	0.94	0.22	53.86	8.71	0	0.16
1998	90.73	0.35	0	6.43	21.94	60.17	1.23	0	0
1999	93.97	4.76	9.24	3.69	4.65	51.13	12.23	0	0.7
2000	74.35	3.9	9.49	0.03	3.26	39.07	0.03	0	6.98
2001	97.94	0.31	3.77	0.18	4.41	84.29	0.93	0	0
2002	77.13	24.23	3.32	0	2.98	28.4	9.38	0	0.75
2003	87.07	0	0.82	0	0.83	82	0	0	0
2004	200.05	14.91	58.85	0	1.63	108.51	3.13	0	0
2005	32.85	0	0.82	0	0.91	19.8	0	0	3.78
2006	197.52	0.25	9.95	0	4.42	115.74	67.12	0	0
2007	23.28	0	0.98	0	8.89	11.14	0.27	0	0
2008	349.32	54.4	1.42	0.48	30	58.71	192.97	0	9.94
2009	73.19	0	6.5	0.01	61.21	4.37	0.68	0	0.16
2010	105.74	38.67	25.12	0	6.55	21.33	3.74	0	0
2011	117.77	14.91	54.39	0	5.99	7.7	23.21	0	0.02
2012	44.51	0.32	0.27	0	0.64	1.82	5.72	26.5	0
2013	55.01	0	7.2	2.43	0	19.54	0	0.9	0.08
2014	153.83	0	2	0	0	81.15	30.4	0	0.1
2015	34.54	0.01	0	6.5	0	10.5	2.5	0	0.4
2016	67.71	0	0.1	0	0.42	14.21	30.28	0	0
2017	38.65	4.4	0.02	0	0	30.18	0	0	1.1
2018	34.78	0	0	28	0	4.88	0	0	0
	11,131	775							

NUMBER OF WILDFIRES BY CAUSE

Year	TOTAL	LIGHT	MACHI	CAMP	SMOKE	DEBRI	ARSON	RAIL	CHILD
1957	0	0	0	0	0	0	0	0	0
1958	31	0	3	1	10	4	6	0	0
1959	29	0	3	2	8	6	0	2	0
1960	55	0	1	3	15	8	8	11	0
1961	46	0	1	5	10	9	4	8	0
1962	34	1	3	1	13	8	0	8	0
1963	47	0	6	0	12	7	0	22	0
1964	31	0	1	1	7	12	0	10	0
1965	34	0	6	0	9	9	1	9	0
1966	20	0	2	2	4	6	5	1	0
1967	20	0	6	1	9	3	1	0	0
1968	28	0	5	0	10	8	5	0	0
1969	20	0	2	1	6	8	3	0	0
1970	29	0	7	0	11	9	2	0	0
1971	27	0	6	0	5	8	7	1	0
1972	22	0	3	0	3	10	4	2	0
1973	35	0	8	0	9	8	6	4	0
1974	45	1	7	0	10	21	0	6	0
1975	20	1	3	0	1	8	1	3	2
1976	43	0	5	0	9	17	3	0	2
1977	40	0	3	1	8	13	0	0	3
1978	57	1	1	3	6	24	4	0	5
1979	34	1	5	1	5	15	0	0	1
1980	19	1	0	0	6	9	0	0	0
1981	31	0	2	0	3	9	6	0	4
1982	24	0	0	1	4	11	3	0	2
1983	28	0	0	0	1	13	7	1	3
1984	37	1	3	0	5	21	1	0	1
1985	46	2	1	0	5	22	9	0	0
1986	55	2	4	0	5	28	5	0	3
1987	50	3	4	1	4	28	4	0	3
1988	55	5	1	0	2	34	5	1	2
1989	31	2	2	0	4	14	1	0	0
1990	42	4	2	0	5	11	9	1	2
1991	42	0	8	0	2	20	5	0	1
1992	42	1	1	1	7	18	5	0	5
1993	82	5	7	3	7	49	1	0	4
1994	28	0	2	0	4	15	0	0	2
1995	33	1	2	0	2	21	3	0	1
1996	28	0	2	0	3	19	3	0	0
1997	28	1	2	1	1	15	5	0	2
1998	21	1	0	3	3	11	2	0	0
1999	64	2	6	2	5	28	2	0	8
2000	76	3	10	1	8	34	1	1	6
2001	57	1	6	1	8	34	2	0	0
2002	48	2	3	0	5	24	8	0	2

2003	23	0	2	0	2	16	0	0	0
2004	41	1	4	0	5	23	2	0	0
2005	27	1	7	0	3	9	0	0	4
2006	81	1	11	0	5	38	25	0	0
2007	41	0	7	0	9	18	3	0	0
2008	38	2	5	1	7	14	5	0	2
2009	18	0	3	1	3	7	2	0	1
2010	41	4	4	0	6	14	11	0	0
2011	51	4	12	0	4	15	6	0	1
2012	40	2	4	0	3	11	6	1	0
2013	36	0	2	2	0	14	0	1	1
2014	34	0	2	0	0	15	2	0	1
2015	22	1	0	3	0	7	2	0	1
2016	33	0	1	0	2	9	5	0	0
2017	25	1	2	0	0	13	0	0	1
2018	7	0	0	2	0	3	0	0	0
	2272	59							

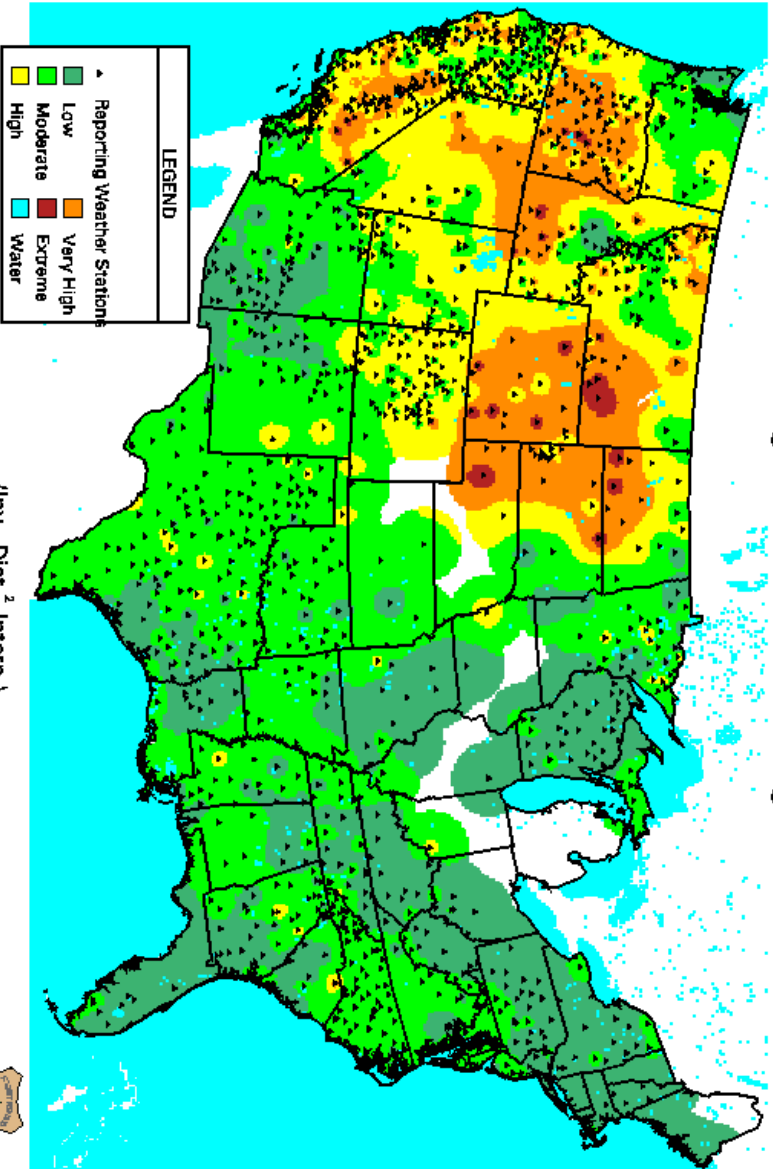
Jurisdiction	Name	Hazard Score	Value	Building size	Content value	Functional Use value	Facility type	Risk	Day	Night
Dearing town	Dearing City Hall	3	125000	1000	15,000	0	Government, Government, Private, Private	Essential, Important	2	?
Dearing town	Dearing Fire Station 2	4	150000	810	250,000	0	Emergency Services, Emergency Services, Fire Fighters, Fire Fighters	Essential, Lifeline	?	?
Dearing town	Fire Station #1	3	350000	2400	500,000	0	Emergency Services, Emergency Services, Fire Fighters, Fire Fighters		0	0
Dearing town	Old Gym	3	455000	6409	15,000	0	Emergency Services, Emergency Services, Fire Fighters, Fire Fighters	Important	?	?
McDuffie County	Bridge ID 189-0021-0/Big Brier Creek	0	350000	5894		0	Government, Government, Water/Sewer, Water/Sewer	Essential, Transportation	?	?
McDuffie County	Bridge ID 189-0023-0/Mattox Creek	1	240000	4020		0	Government, Government, Water/Sewer, Water/Sewer	Essential, Transportation	?	?
McDuffie County	Bridge ID 189-0024-0/Big Brier Creek	1	350000	6515		0	Government, Government, Water/Sewer, Water/Sewer	Essential, Transportation	?	?
McDuffie County	Bridge ID 189-0025-0/Fort Creek	0	65000	576		0	Government, Government, Water/Sewer, Water/Sewer	Essential, Transportation	?	?
McDuffie County	Bridge ID 189-0029-0/Sweetwater Creek	1	75000	888		0	Government, Government, Water/Sewer, Water/Sewer	Essential, Transportation	?	?
McDuffie County	Bridge ID 189-5001-0/Greenbrier Creek	0	50000	576		0	Government, Government, Water/Sewer, Water/Sewer	Essential, Transportation	?	?
McDuffie County	Bridge ID 189-5002-0/Germany Creek	2	95000	1200		0	Government, Government, Water/Sewer, Water/Sewer	Essential, Transportation	?	?
McDuffie County	Bridge ID 189-5003-0/Little Germany Creek	2	60000	696		0	Government, Government, Water/Sewer, Water/Sewer	Essential, Transportation	?	?
McDuffie County	Bridge ID 189-5004-0/Headstall Creek	0	70000	888		0	Government, Water/Sewer	Essential, Transportation	?	?
McDuffie County	Bridge ID 189-5006-0/Whites Creek	2	70600	1032		0	Government, Water/Sewer	Transportation	?	?
McDuffie County	Bridge ID 189-5007-0/Big Brier Creek	0	196955	3539		0	Government, Water/Sewer	Essential, Transportation	2	2
McDuffie County	Bridge ID 189-5008-0/Big Brier Creek	0	95000	1296		0	Government, Government, Water/Sewer, Water/Sewer	Essential, Transportation	?	?
McDuffie County	Bridge ID 189-5009-0/Little Germany Creek	1	57600	552		0	Government, Water/Sewer	Transportation	?	?
McDuffie County	Bridge ID 189-5011-0/Hart Creek	0	58400	768		0	Government, Water/Sewer	Transportation	?	?
McDuffie County	Bridge ID 189-5012-0/Chill Creek	1	54800	696		0	Government, Water/Sewer	Transportation	?	?
McDuffie County	Bridge ID 189-5013-0/Germany Creek	1	88400	1368		0	Government, Water/Sewer	Transportation	?	?
McDuffie County	Bridge ID 189-5014-0/Mattox Creek	1	71600	1032		0	Government, Water/Sewer	Transportation	?	?
McDuffie County	Bridge ID 189-5015-0/Middle Creek	1	395600	7512		0	Government, Water/Sewer	Transportation	?	?

McDuffie County	Dearing Elementary School		3	4500000	60528	850,000	0	Emergency Services, Emergency Services, Fire Fighters, Fire Fighters	Essential, Important, Special Consideration, Vulnerable Population	545	2
McDuffie County	Dearing Wastewater Treatment Facility		4	350000	684	75,000	0	Government, Government, Water/Sewer, Water/Sewer	Essential, Hazardous Materials, Important, Lifeline	2	2
McDuffie County	J.A. Maxwell Elementary School		3	5250000	58396	125,000	0	Emergency Services, Emergency Services, Fire Fighters, Fire Fighters	Essential, Important, Special Consideration	529	0
McDuffie County	McDuffie Co. Solid Waste Scales & Scalehouse		3	120000	1500	35,000	0	NGO, NGO, Water/Sewer, Water/Sewer	Essential	2	2
McDuffie County	McDuffie Co. Solid Waste Transfer Station		3	165000	2300	180,000	0	Education, Education, K - 12, K - 12	Essential	2	2
McDuffie County	McDuffie County Animal Shelter		3	130000	1590	90,000	0	Government, Government, Private, Private	Important, Vulnerable Population	3	1
McDuffie County	McDuffie County Board of Education		3	900000	9644	425,000	0	Government, Government, Water/Sewer, Water/Sewer	Essential, Important	25	2
McDuffie County	McDuffie County Courthouse		3	1750000	6500	850,000	0	Law Enforcement, Law Enforcement, Court House, Court House	Essential, Important	25	2
McDuffie County	McDuffie County Fire Department Station 05		1	800000	2863	700,000	0	Emergency Services, Emergency Services, Fire Fighters, Fire Fighters	Essential, Important	2	2
McDuffie County	McDuffie County Fire Department Station 06		1	800000	3384	650,000	0	Emergency Services, Emergency Services, Fire Fighters, Fire Fighters	Essential, Important	2	2
McDuffie County	McDuffie County Fire Dept Station 01		2	1500000	3310	1,250,000	0	Emergency Services, Emergency Services, Fire Fighters, Fire Fighters	Essential, Important	10	6
McDuffie County	McDuffie County Fire Station #3		4	800000	2520	450,000	0	Emergency Services, Emergency Services, Fire Fighters, Fire Fighters	Essential, Lifeline	2	2
McDuffie County	McDuffie County Fire Station #4		3	850000	2400	1,350,000	0	Emergency Services, Emergency Services, Fire Fighters, Fire Fighters	Essential, Lifeline	0	0
McDuffie County	McDuffie County Fire Station 2		1	1500000	6212	1,000,000	0	Emergency Services, Emergency Services, Fire Fighters, Fire Fighters	Essential, Lifeline	4	4
McDuffie County	McDuffie County Health Department		3	600000	5253	850,000	0	Government, Government, Private, Private	Essential, Important, Vulnerable Population	45	2
McDuffie County	McDuffie County Sheriff's Office		2	750000	2000	300,000	0	Law Enforcement, Law Enforcement, Sheriff, Sheriff	Essential	15	10
McDuffie County	Norris Elementary School		3	7500000	89611	1,500,000	0	Government, Government, Private, Private	Essential, Important	555	0
McDuffie County	Sheriff's Office - Substation		3	250000	1000	10,000	0	Law Enforcement, Law Enforcement, Sheriff, Sheriff	Essential	2	2

McDuffie County	SweetWater Gymnasium		2	2475000	23000	350,000	0	Emergency Services, Emergency Services, Fire Fighters, Fire Fighters	Essential, Important	150	?
McDuffie County	Thomson Elementary School		3	5500000	60850	1,250,000	0	Government, Government, Private, Private	Essential, Important	661	?
McDuffie County	Thomson High School		3	9500000	181588	2,200,000	0	Medical, Medical, Hospital, Hospital	Essential, Important	1003	?
McDuffie County	Thomson Land Application System		1	3000000	2000		0	Government, Government, Water/Sewer, Water/Sewer	Essential, Hazardous Materials	2	?
McDuffie County	Thomson Middle School		3	8500000	133700	1,750,000	0	Law Enforcement, Law Enforcement, Sheriff, Sheriff	Essential, Important, Special Consideration	653	?
McDuffie County	Thomson-McDuffie Airport		1	9000000	11253	1,500,000	0	NGO, NGO, Transportation, Transportation	Economic Assets, Essential, Transportation	10	?
McDuffie County	Thomson-McDuffie County Library		3	1500000	13500	1,000,000	0	Education, Education, Library, Library	Essential, Important	300	300
McDuffie County	Thomson-McDuffie Government Complex		3	15000000	70000	1,500,000	0	Government, Government, Water/Sewer, Water/Sewer	Essential	?	?
McDuffie County	Thomson-McDuffie Jr. High		3	8500000	165225	2,500,000	0	Emergency Services, Emergency Services, Fire Fighters, Fire Fighters	Essential, Vulnerable Population	673	?
McDuffie County	UNivesity Medical Regional McDuffie		3	7000000	25000	5,000,000	0	Medical, Medical, Hospital, Hospital		300	185
Thomson city	Augusta Highway Water Tower		3	300000	1		0	Government, Water/Sewer	Essential, Lifeline	2	2
Thomson city	Bohler Street Water Tower		1	315500	1		0	Government, Water/Sewer	Essential, Lifeline	?	?
Thomson city	City of Thomas Wastewater Holding Tank		3	75000	814	6,500	0	Government, Government, Water/Sewer, Water/Sewer	Essential, Hazardous Materials, Important, Lifeline	?	?
Thomson city	City of Thomson Wastewater Pumphouse		4	15000	104	17,000	0	Government, Government, Water/Sewer, Water/Sewer	Essential, Important, Lifeline	2	?
Thomson city	City of Thomson Water Filter Plant		3	1250000	12316	450,000	0	Government, Government, Water/Sewer, Water/Sewer	Essential, Important, Lifeline	2	?
Thomson city	City of Thomson Water Filter Plant/Clear Well		3	250000	2704		0	Government, Government, Water/Sewer, Water/Sewer	Essential, Important, Lifeline	2	?
Thomson city	Clark Hill Pump Station		0	200000	1652	155,000	0	Government, Government, Water/Sewer, Water/Sewer	Essential, Important, Lifeline	?	?
Thomson city	CrossRoads Learning Center		3	2500000	11790	300,000	0	Medical, Medical, Hospital, Hospital	Important	105	?
Thomson city	Dearing Water Tower		3	220000	1		0	Government, Government, Water/Sewer, Water/Sewer	Essential, Important, Lifeline	?	?
Thomson city	Department of Family and Children Services		3	950000	7800	750,000	0	Government, Government, Water/Sewer, Water/Sewer	Essential, Important, Vulnerable Population	45	?
Thomson city	Ferrous Road Water Tower		3	550000	1		0	Government, Government, Water/Sewer, Water/Sewer	Essential, Important, Lifeline	?	?
Thomson city	Lumpkin Street Water Tower		3	285000	1		0	Government, Government, Water/Sewer, Water/Sewer	Essential, Important, Lifeline	?	?

Thomson city	Norris Lift Station		3	100000	140		0	Government, Government, Water/Sewer, Water/Sewer	Essential, Hazardous Materials, Important	2	2
Thomson city	Senior Citizens Center		3	1200000	7700	750,000	0	Government, Government, Private, Private	Essential, Vulnerable Population	250	0
Thomson city	Thomson City Hall		0	450000	4446	175,000	0	Government, Government, Private, Private	Essential	12	0
Thomson city	Thomson Police Department		3	500000	2000	250,000	0	Law Enforcement, Law Enforcement, Police, Police	Essential, Important	18	8
Thomson city	Thomson Police Department Substation		3	185000	2479	15,000	0	Law Enforcement, Law Enforcement, Police, Police	Essential, Important	2	2
Thomson city	Thomson Public Works Gas & Diesel Pump		3	20000	200	50,000	0	Government, Government, Water/Sewer, Water/Sewer	Essential, Important, Lifeline	2	2
Thomson city	Thomson Public Works Gas Office		3	12000	192	8,000	0	Government, Government, Water/Sewer, Water/Sewer	Essential, Hazardous Materials, Important, Lifeline	2	2
Thomson city	Thomson Public Works Maintenance Shop		3	350000	6732	275,000	0	Government, Government, Water/Sewer, Water/Sewer	Essential, Important, Lifeline	2	2
Thomson city	Thomson Public Works Office		3	110000	1066	35,000	0	Government, Government, Water/Sewer, Water/Sewer	Essential, Important, Lifeline	5	2
Thomson city	Thomson Public Works Storage		3	250000	6450	15,000	0	Government, Government, Water/Sewer, Water/Sewer	Essential, Important, Lifeline	2	2
Thomson city	Thomson WPCP		4	1650000	2931	450,000	0	Government, Government, Water/Sewer, Water/Sewer	Essential, Hazardous Materials, Lifeline	2	2
Thomson city	Thomson-McDuffie Co Water Treatment Plant		2	522600	8820	85,000	0	Government, Government, Water/Sewer, Water/Sewer	Essential, Important	2	2
Thomson city	Thomson-McDuffie Fire Department Station 07		3	850000	5472	1,350,000	0	Emergency Services, Emergency Services, Fire Fighters, Fire Fighters	Essential, Important, Lifeline	5	4
Thomson city	Warrenton Highway Water Tower		0	350000	1		0	Government, Government, Water/Sewer, Water/Sewer	Essential, Important, Lifeline	2	2
				\$115,474,055		\$ 33,656,500.00				5978	528

Observed Fire Danger Class: 10-Aug-21

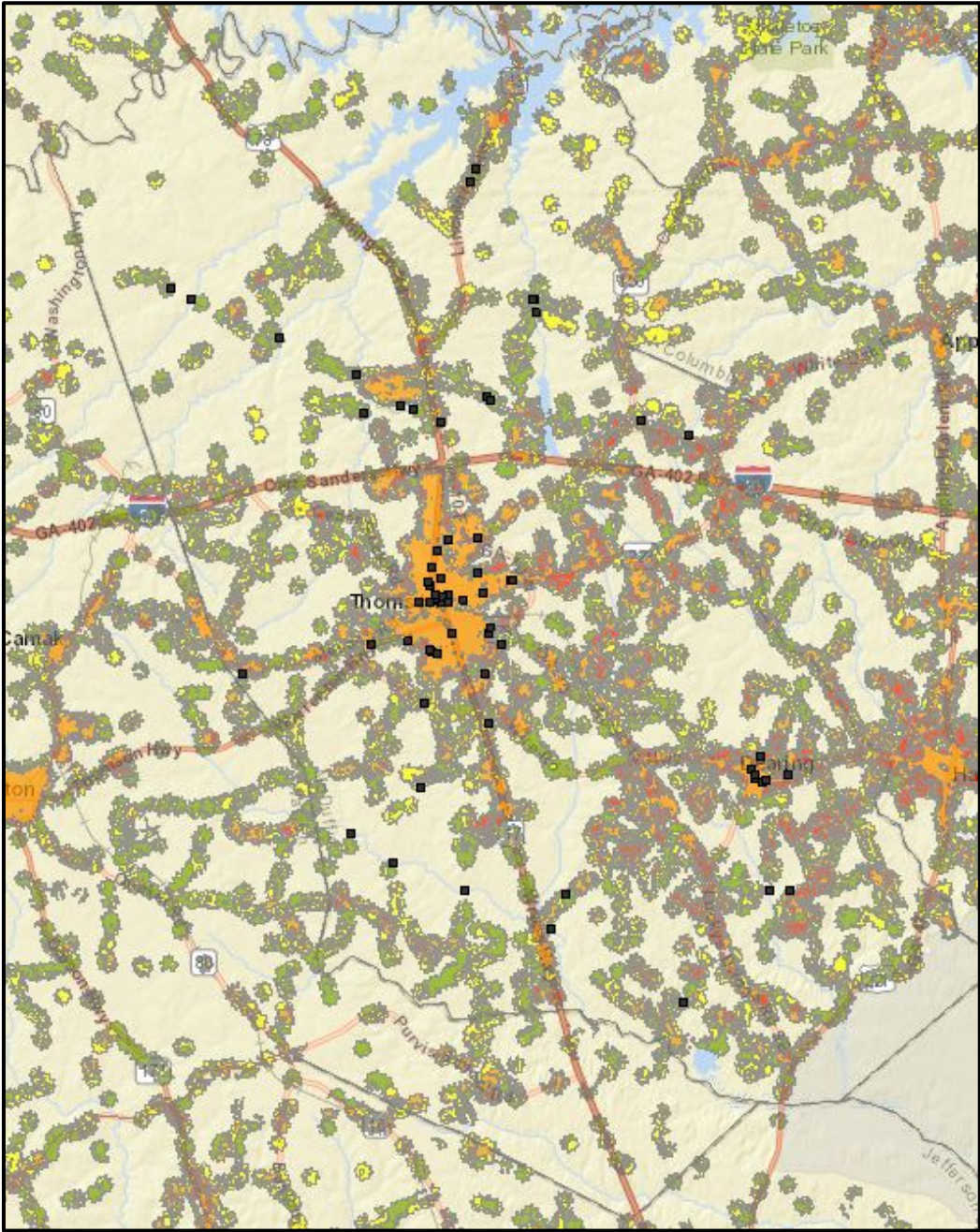


(Inv. Dist. 2 Interp.)

WFAS-MAPS Graphics FIRE BEHAVIOR RESEARCH MISSOULA, MT

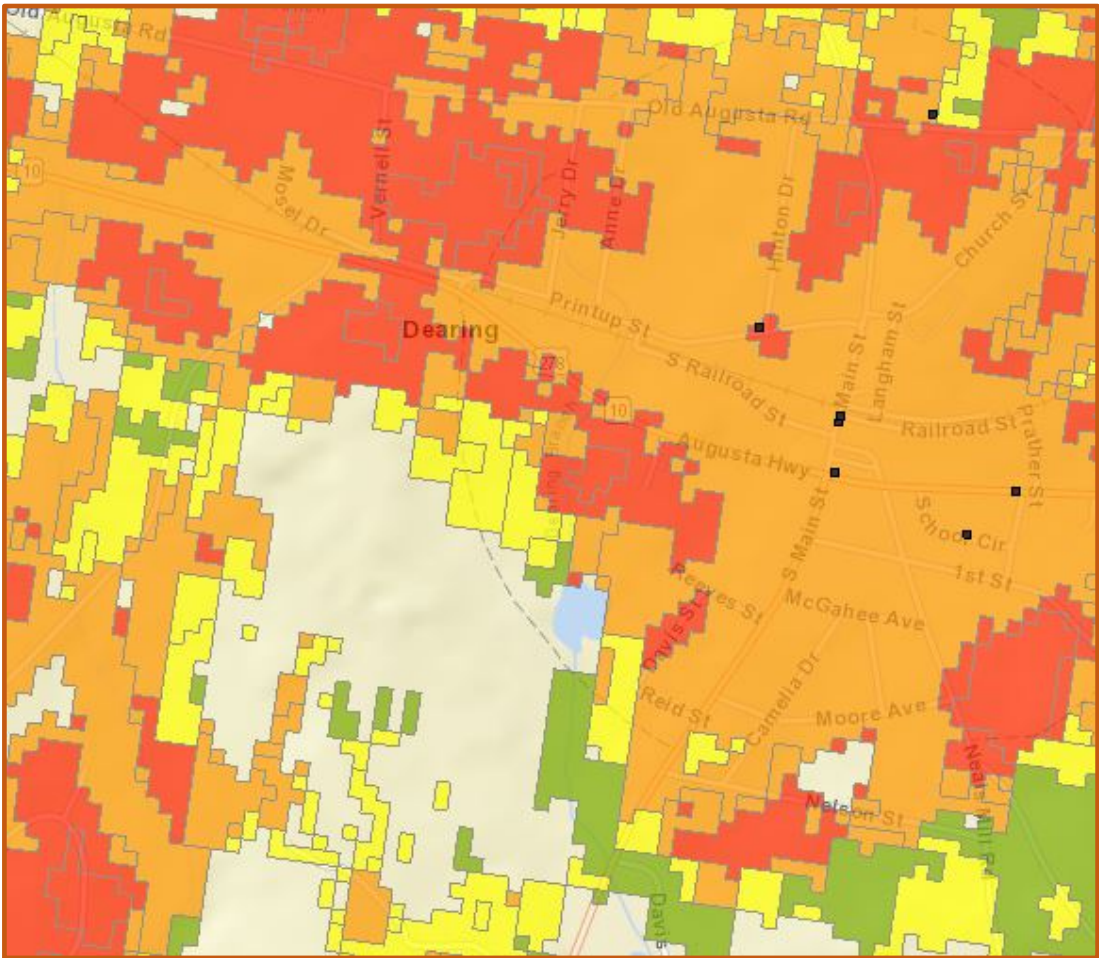


McDuffie County Wildfire Map from Georgia Mitigation Information System



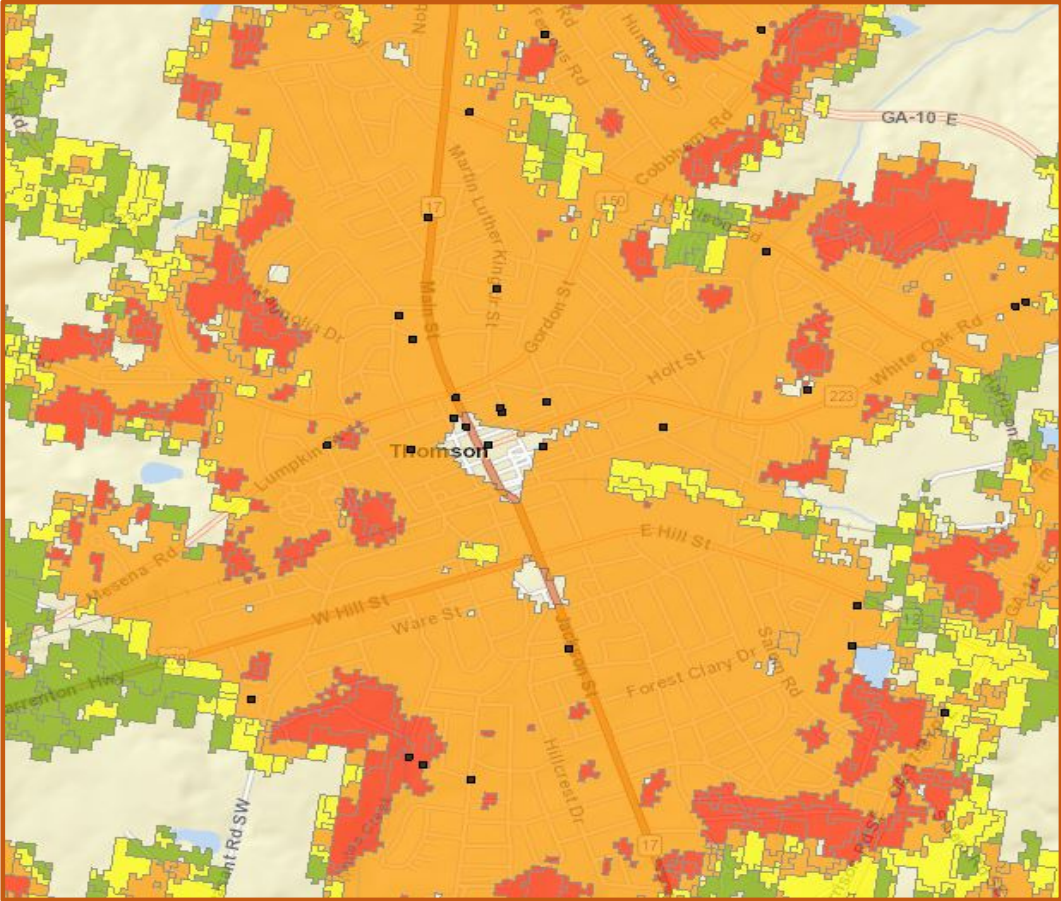
SCORE	Description
4	High
3	Moderate
2	Low
1	Very Low
0	No Houses
	Agriculture
	Water
	City

Dearing, GA Wildfire Map from Georgia Mitigation Information System



Score	Description
4	High
3	Moderate
2	Low
1	Very Low
0	No Houses
	Agriculture
	Water
	City

Thomson, GA Wildfire Map from Georgia Mitigation Information System



Score	Description
4	High
3	Moderate
2	Low
1	Very Low
0	No Houses
	Agriculture
	Water
	City

TORNADO

A tornado is a violent windstorm characterized by a twisting, funnel-shaped cloud. It is spawned by a thunderstorm or the result of a hurricane and is produced when cool air overrides a layer of warm air, forcing the warm air to rise rapidly. Tornadoes are among the most unpredictable and destructive of weather phenomena and can strike at any time of the year if the essential conditions are present. The damage from a tornado is a result of the high wind velocity and wind-blown debris. The positions of the subtropical and polar jet streams often are conducive to the formation of storms in the Gulf region. The table below shows the original Fujita Scale and the Enhanced Fujita Scale (in use since 2007) to rate the intensity of a tornado by examining the damage caused by the tornado after it has passed over a manmade structure.

Tornadoes do not touch down frequently; however, the unpredictability and the potential for excessive damage caused by tornadoes makes it imperative that mitigation measures identified in this plan receive full consideration. Based on historical data, there have been nine reported tornadoes in the planning area. There have not been any reports of tornadoes since the last update. Since 1950, there has been approximately \$130,000 in property damage and crop damage as well as three deaths from tornadoes. Tornadoes tend to strike in somewhat random fashion, making the task of calculating a recurrence interval extremely difficult. There is a 25 percent annual chance of a tornado event at for McDuffie County as a whole.

Location	Date	Event	Scale	Deaths	Injuries	Property Damage	Crop Damage	Description
MCDUFFIE CO.	3/20/1875	Tornado	*	*	*	*	*	25 people were killed and 65 were injured in a tornado that formed Hancock County, moved across McDuffie County and dissipated in Columbia County.
MCDUFFIE CO.	5/24/1955	Tornado	F0	3	0	2500	0	
MCDUFFIE CO./THOMSON	4/5/1957	Tornado	F2	0	0	*	*	
MCDUFFIE CO.	2/2/1973	Tornado	F1	0	0	2500	0	
THOMSON	1/13/2005	Tornado	F0	0	0	0	0	Storm Survey found an F0 broke trees in half at the intersection of I-20 and White Oak road.
THOMSON	3/1/2007	Tornado	EF2	0	0	0	0	An EF2 started in Warren county and moved through McDuffie county taking down numerous trees and powerlines. The twister moved along hwy 278 to Thomson then along hwy 150 to I-20. Several vehicles were totaled and many homes and a private school had moderate damage. Ground survey found a damage path of 9 miles in McDuffie county but an areal survey found the total length to be 15 miles. There were no injuries or deaths.
MCDUFFIE CO.	3/15/2008	Tornado	EF0	0	0	0	0	Storm survey found an F0 started in McDuffie county taking down many trees and continued into Columbia county.
MCDUFFIE CO.	2/18/2009	Tornado	EF0	0	0	0	50000	Storm survey found the tornado path coming out of Wilkes county into McDuffie county. Only trees were in the path of the tornado with many being taken down just south of the lakeshore.

MCDUFFIE CO.	4/10/2009	Tornado	EFO	0	0	72000	0	Dispatch reported trees down, some on vehicles, on Moose Club road. NWS damage survey also found and minor damage to several homes.
* Unknown				3	0	\$ 77,000.00	\$ 50,000.00	

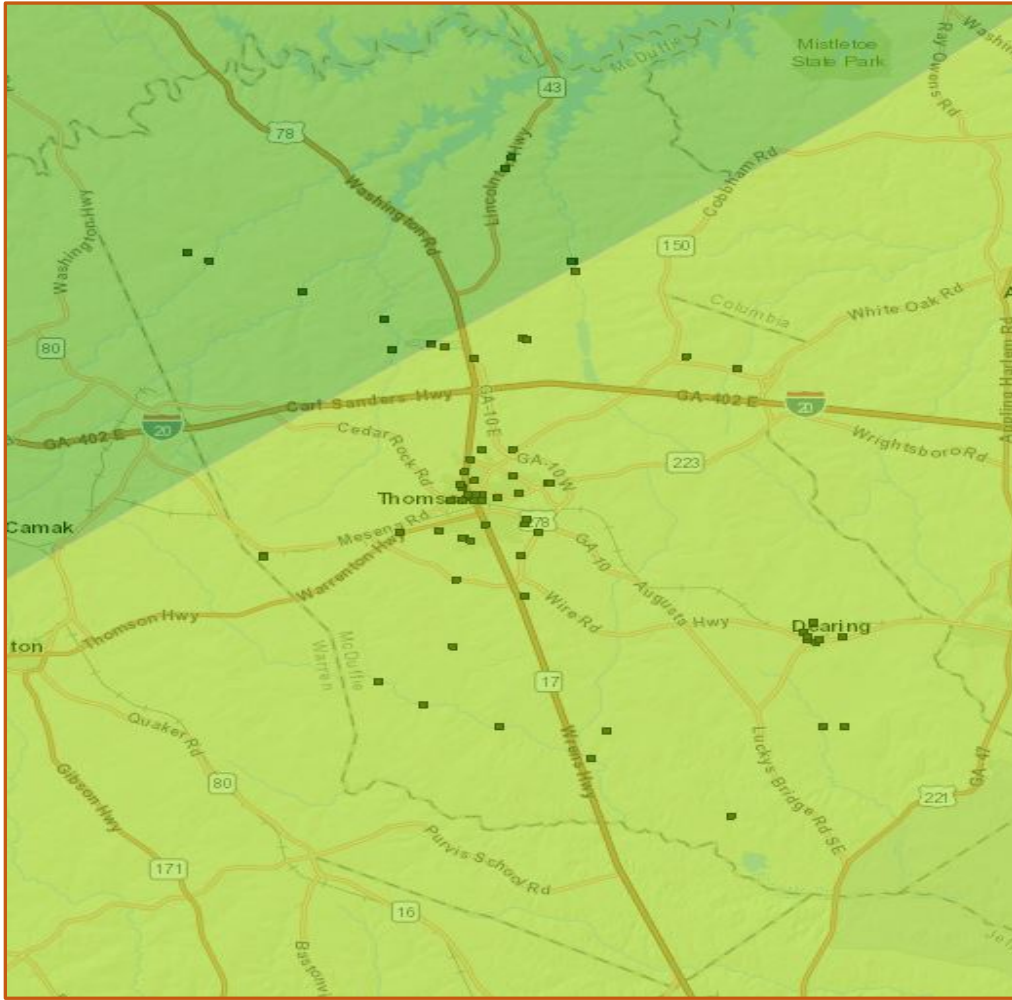
Jurisdiction	Name	Hazard Score	Value	Replacement Value Year	Building size	Content value	Functional Use value	Facility type	Risk	Day	Night
Dearing town	Dearing City Hall	2	125000	2016	1000	15,000	0	Government, Government, Private, Private	Essential, Important	2	?
Dearing town	Dearing Fire Station 2	2	150000	2016	810	250,000	0	Emergency Services, Emergency Services, Fire Fighters, Fire Fighters	Essential, Lifeline	?	?
Dearing town	Fire Station #1	2	350000	2016	2400	500,000	0	Emergency Services, Emergency Services, Fire Fighters, Fire Fighters		0	0
Dearing town	Old Gym	2	455000	2016	6409	15,000	0	Emergency Services, Emergency Services, Fire Fighters, Fire Fighters	Important	?	?
McDuffie County	Bridge ID 189-0021-0/Big Brier Creek	2	350000	2010	5894		0	Government, Government, Water/Sewer, Water/Sewer	Essential, Transportation	?	?
McDuffie County	Bridge ID 189-0024-0/Big Brier Creek	2	350000	2010	6515		0	Government, Government, Water/Sewer, Water/Sewer	Essential, Transportation	?	?
McDuffie County	Bridge ID 189-0025-0/Fort Creek	2	65000	2010	576		0	Government, Government, Water/Sewer, Water/Sewer	Essential, Transportation	?	?
McDuffie County	Bridge ID 189-0029-0/Sweetwater Creek	2	75000	2010	888		0	Government, Government, Water/Sewer, Water/Sewer	Essential, Transportation	?	?
McDuffie County	Bridge ID 189-5001-0/Greenbrier Creek	2	50000	2010	576		0	Government, Government, Water/Sewer, Water/Sewer	Essential, Transportation	?	?
McDuffie County	Bridge ID 189-5004-0/Headstall Creek	2	70000	2010	888		0	Government, Water/Sewer	Essential, Transportation	?	?
McDuffie County	Bridge ID 189-5006-0/Whites Creek	2	70600	2010	1032		0	Government, Water/Sewer	Transportation	?	?
McDuffie County	Bridge ID 189-5007-0/Big Brier Creek	2	196955	2010	3539		0	Government, Water/Sewer	Essential, Transportation	2	2
McDuffie County	Bridge ID 189-5008-0/Big Brier Creek	2	95000	2010	1296		0	Government, Government, Water/Sewer, Water/Sewer	Essential, Transportation	?	?
McDuffie County	Bridge ID 189-5009-0/Little Germany Creek	2	57600	2010	552		0	Government, Water/Sewer	Transportation	?	?
McDuffie County	Bridge ID 189-5013-0/Germany Creek	2	88400	2010	1368		0	Government, Water/Sewer	Transportation	?	?
McDuffie County	Dearing Elementary School	2	4500000	2016	60528	850,000	0	Emergency Services, Emergency Services, Fire Fighters, Fire Fighters	Essential, Important, Special Consideration, Vulnerable Population	545	?
McDuffie County	Dearing Wastewater Treatment Facility	2	350000	2016	684	75,000	0	Government, Government, Water/Sewer, Water/Sewer	Essential, Hazardous Materials, Important, Lifeline	2	?
McDuffie County	J.A. Maxwell Elementary School	2	5250000	2016	58396	125,000	0	Emergency Services, Emergency Services, Fire Fighters, Fire Fighters	Essential, Important, Special Consideration	529	0
McDuffie County	Scales & Scalehouse	2	120000	2016	1500	35,000	0	NGO, NGO, Water/Sewer, Water/Sewer	Essential	2	?
McDuffie County	Transfer Station	2	165000	2016	2300	180,000	0	Education, Education, K - 12, K - 12	Essential	2	?

McDuffie County	McDuffie County Animal Shelter	2	130000	2016	1590	90,000	0	Government, Government, Private, Private	Important, Vulnerable Population	3	1
McDuffie County	McDuffie County Board of Education	2	900000	2016	9644	425,000	0	Government, Government, Water/Sewer, Water/Sewer	Essential, Important	25	2
McDuffie County	McDuffie County Courthouse	2	1750000	2016	6500	850,000	0	Law Enforcement, Law Enforcement, Court House, Court House	Essential, Important	25	2
McDuffie County	McDuffie County Fire Department Station 05	2	800000	2020	2863	700,000	0	Emergency Services, Emergency Services, Fire Fighters, Fire Fighters	Essential, Important	2	2
McDuffie County	McDuffie County Fire Department Station 06	2	800000	2020	3384	650,000	0	Emergency Services, Emergency Services, Fire Fighters, Fire Fighters	Essential, Important	2	2
McDuffie County	McDuffie County Fire Dept Station 01	2	1500000	2019	3310	1,250,000	0	Emergency Services, Emergency Services, Fire Fighters, Fire Fighters	Essential, Important	10	6
McDuffie County	McDuffie County Fire Station #3	2	800000	2020	2520	450,000	0	Emergency Services, Emergency Services, Fire Fighters, Fire Fighters	Essential, Lifeline	2	2
McDuffie County	McDuffie County Fire Station 2	2	1500000	2020	6212	1,000,000	0	Emergency Services, Emergency Services, Fire Fighters, Fire Fighters	Essential, Lifeline	4	4
McDuffie County	McDuffie County Health Department	2	600000	2016	5253	850,000	0	Government, Government, Private, Private	Essential, Important, Vulnerable Population	45	2
McDuffie County	McDuffie County Sheriff's Office	2	750000	2016	2000	300,000	0	Law Enforcement, Law Enforcement, Sheriff, Sheriff	Essential	15	10
McDuffie County	Norris Elementary School	2	7500000	2016	89611	1,500,000	0	Government, Government, Private, Private	Essential, Important	555	0
McDuffie County	Sheriff's Office - Substation	2	250000	2016	1000	10,000	0	Law Enforcement, Law Enforcement, Sheriff, Sheriff	Essential	2	2
McDuffie County	SweetWater Gymnasium	2	2475000	2016	23000	350,000	0	Emergency Services, Emergency Services, Fire Fighters, Fire Fighters	Essential, Important	150	2
McDuffie County	Thomson Elementary School	2	5500000	2016	60850	1,250,000	0	Government, Government, Private, Private	Essential, Important	661	2
McDuffie County	Thomson High School	2	9500000	2016	181588	2,200,000	0	Medical, Medical, Hospital, Hospital	Essential, Important	1003	2
McDuffie County	Thomson Land Application System	2	3000000	2016	2000		0	Government, Government, Water/Sewer, Water/Sewer	Essential, Hazardous Materials	2	2
McDuffie County	Thomson Middle School	2	8500000	2016	133700	1,750,000	0	Law Enforcement, Law Enforcement, Sheriff, Sheriff	Essential, Important, Special Consideration	653	2
McDuffie County	Thomson-McDuffie County Library	2	1500000	2016	13500	1,000,000	0	Education, Education, Library, Library	Essential, Important	300	300
McDuffie County	Thomson-McDuffie Government Complex	2	15000000	2016	70000	1,500,000	0	Government, Government, Water/Sewer, Water/Sewer	Essential	2	2
McDuffie County	Thomson-McDuffie Jr. High	2	8500000	2016	165225	2,500,000	0	Emergency Services, Emergency Services, Fire Fighters, Fire Fighters	Essential, Vulnerable Population	673	2

McDuffie County	UNiversity Medical Regional McDuffie	2	7000000	2016	25000	5,000,000	0	Medical, Medical, Hospital, Hospital		300	185
Thomson city	Augusta Highway Water Tower	2	300000	2010	1		0	Government, Water/Sewer	Essential, Lifeline	2	2
Thomson city	Bohler Street Water Tower	2	315500	2010	1		0	Government, Water/Sewer	Essential, Lifeline	2	2
Thomson city	City of Thomas Wastewater Holding Tank	2	75000	2016	814	6,500	0	Government, Government, Water/Sewer, Water/Sewer	Essential, Hazardous Materials, Important, Lifeline	2	2
Thomson city	City of Thomson Wastewater Pumphouse	2	15000	2016	104	17,000	0	Government, Government, Water/Sewer, Water/Sewer	Essential, Important, Lifeline	2	2
Thomson city	City of Thomson Water Filter Plant	2	1250000	2016	12316	450,000	0	Government, Government, Water/Sewer, Water/Sewer	Essential, Important, Lifeline	2	2
Thomson city	City of Thomson Water Filter Plant/Clear Well	2	250000	2016	2704		0	Government, Government, Water/Sewer, Water/Sewer	Essential, Important, Lifeline	2	2
Thomson city	Clark Hill Pump Station	2	200000	2016	1652	155,000	0	Government, Government, Water/Sewer, Water/Sewer	Essential, Important, Lifeline	2	2
Thomson city	CrossRoads Learning Center	2	2500000	2016	11790	300,000	0	Medical, Medical, Hospital, Hospital	Important	105	2
Thomson city	Dearing Water Tower	2	220000	2016	1		0	Government, Government, Water/Sewer, Water/Sewer	Essential, Important, Lifeline	2	2
Thomson city	Department of Family and Children Services	2	950000	2016	7800	750,000	0	Government, Government, Water/Sewer, Water/Sewer	Essential, Important, Vulnerable Population	45	2
Thomson city	Ferrous Road Water Tower	2	550000	2016	1		0	Government, Government, Water/Sewer, Water/Sewer	Essential, Important, Lifeline	2	2
Thomson city	Lumpkin Street Water Tower	2	285000	2016	1		0	Government, Government, Water/Sewer, Water/Sewer	Essential, Important, Lifeline	2	2
Thomson city	Norris Lift Station	2	100000	2016	140		0	Government, Government, Water/Sewer, Water/Sewer	Essential, Hazardous Materials, Important	2	2
Thomson city	Senior Citizens Center	2	1200000	2016	7700	750,000	0	Government, Government, Private, Private	Essential, Vulnerable Population	250	0
Thomson city	Thomson City Hall	2	450000	2016	4446	175,000	0	Government, Government, Private, Private	Essential	12	0
Thomson city	Thomson Police Department	2	500000	2016	2000	250,000	0	Law Enforcement, Law Enforcement, Police, Police	Essential, Important	18	8
Thomson city	Thomson Police Department Substation	2	185000	2016	2479	15,000	0	Law Enforcement, Law Enforcement, Police, Police	Essential, Important	2	2
Thomson city	Thomson Public Works Gas & Diesel Pump	2	20000	2016	200	50,000	0	Government, Government, Water/Sewer, Water/Sewer	Essential, Important, Lifeline	2	2
Thomson city	Thomson Public Works Gas Office	2	12000	2016	192	8,000	0	Government, Government, Water/Sewer, Water/Sewer	Essential, Hazardous Materials, Important, Lifeline	2	2
Thomson city	Thomson Public Works Maintenance Shop	2	350000	2016	6732	275,000	0	Government, Government, Water/Sewer, Water/Sewer	Essential, Important, Lifeline	2	2
Thomson city	Thomson Public Works Office	2	110000	2016	1066	35,000	0	Government, Government, Water/Sewer, Water/Sewer	Essential, Important, Lifeline	5	2

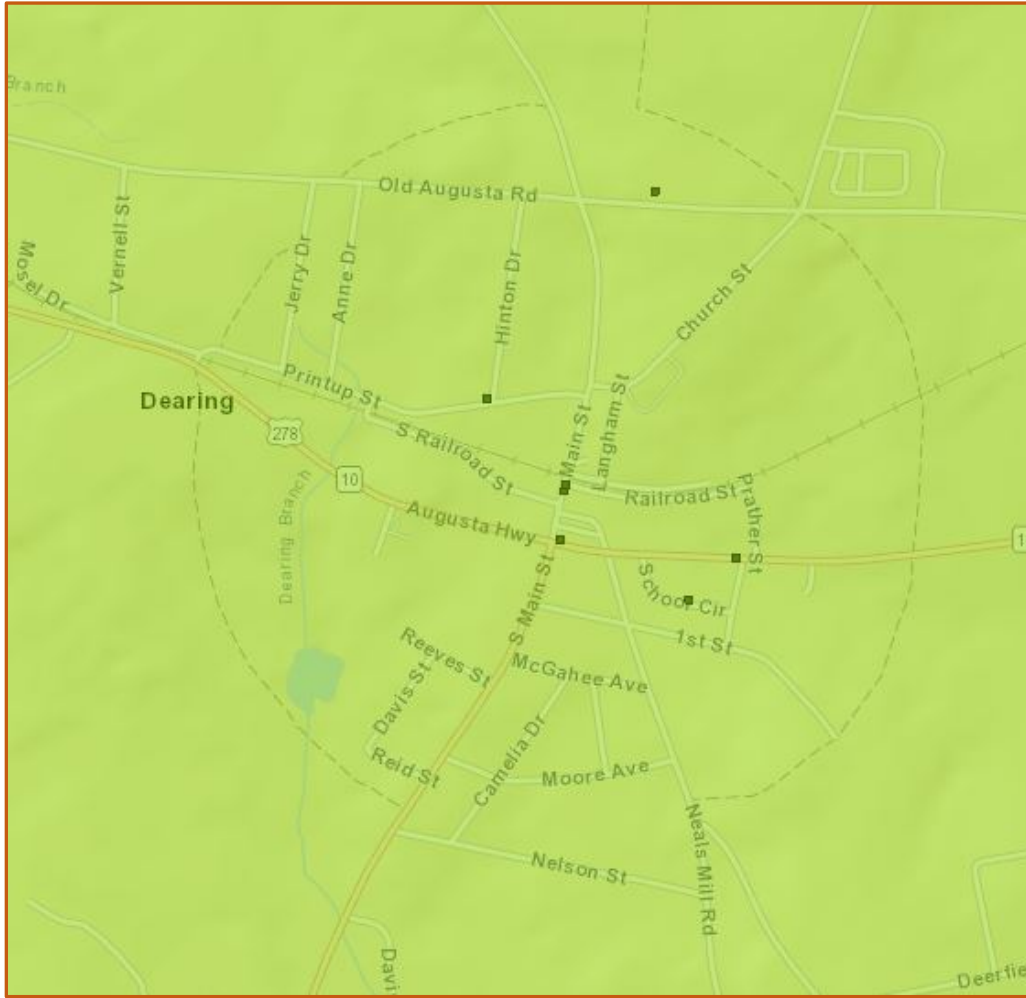
Thomson city	Thomson Public Works Storage	2	250000	2016	6450	15,000	0	Government, Government, Water/Sewer, Water/Sewer	Essential, Important, Lifeline	2	2
Thomson city	Thomson WPCP	2	1650000	2016	2931	450,000	0	Government, Government, Water/Sewer, Water/Sewer	Essential, Hazardous Materials, Lifeline	2	2
Thomson city	Thomson-McDuffie Fire Department Station 07	2	850000	2020	5472	1,350,000	0	Emergency Services, Emergency Services, Fire Fighters, Fire Fighters	Essential, Important, Lifeline	5	4
Thomson city	Warrenton Highway Water Tower	2	350000	2016	1		0	Government, Government, Water/Sewer, Water/Sewer	Essential, Important, Lifeline	2	2
McDuffie County	Bridge ID 189-0023-0/Mattox Creek	1	240000	2010	4020		0	Government, Government, Water/Sewer, Water/Sewer	Essential, Transportation	2	2
McDuffie County	Bridge ID 189-5002-0/Germany Creek	1	95000	2010	1200		0	Government, Government, Water/Sewer, Water/Sewer	Essential, Transportation	2	2
McDuffie County	Bridge ID 189-5003-0/Little Germany Creek	1	60000	2010	696		0	Government, Government, Water/Sewer, Water/Sewer	Essential, Transportation	2	2
McDuffie County	Bridge ID 189-5011-0/Hart Creek	1	58400	2010	768		0	Government, Water/Sewer	Transportation	2	2
McDuffie County	Bridge ID 189-5012-0/Chill Creek	1	54800	2010	696		0	Government, Water/Sewer	Transportation	2	2
McDuffie County	Bridge ID 189-5014-0/Mattox Creek	1	71600	2010	1032		0	Government, Water/Sewer	Transportation	2	2
McDuffie County	Bridge ID 189-5015-0/Middle Creek	1	395600	2010	7512		0	Government, Water/Sewer	Transportation	2	2
McDuffie County	McDuffie County Fire Station #4	1	850000	2020	2400	1,350,000	0	Emergency Services, Emergency Services, Fire Fighters, Fire Fighters	Essential, Lifeline	0	0
McDuffie County	Thomson-McDuffie Airport	1	9000000	2016	11253	1,500,000	0	NGO, NGO, Transportation, Transportation	Economic Assets, Essential, Transportation	10	2
Thomson city	Thomson-McDuffie Co Water Treatment Plant	1	522600	2016	8820	85,000	0	Government, Government, Water/Sewer, Water/Sewer	Essential, Important	2	2
			\$115,474,055			\$ 33,656,500.00				5978	528

McDuffie County Wind Hazard Map from Georgia Mitigation Information System.



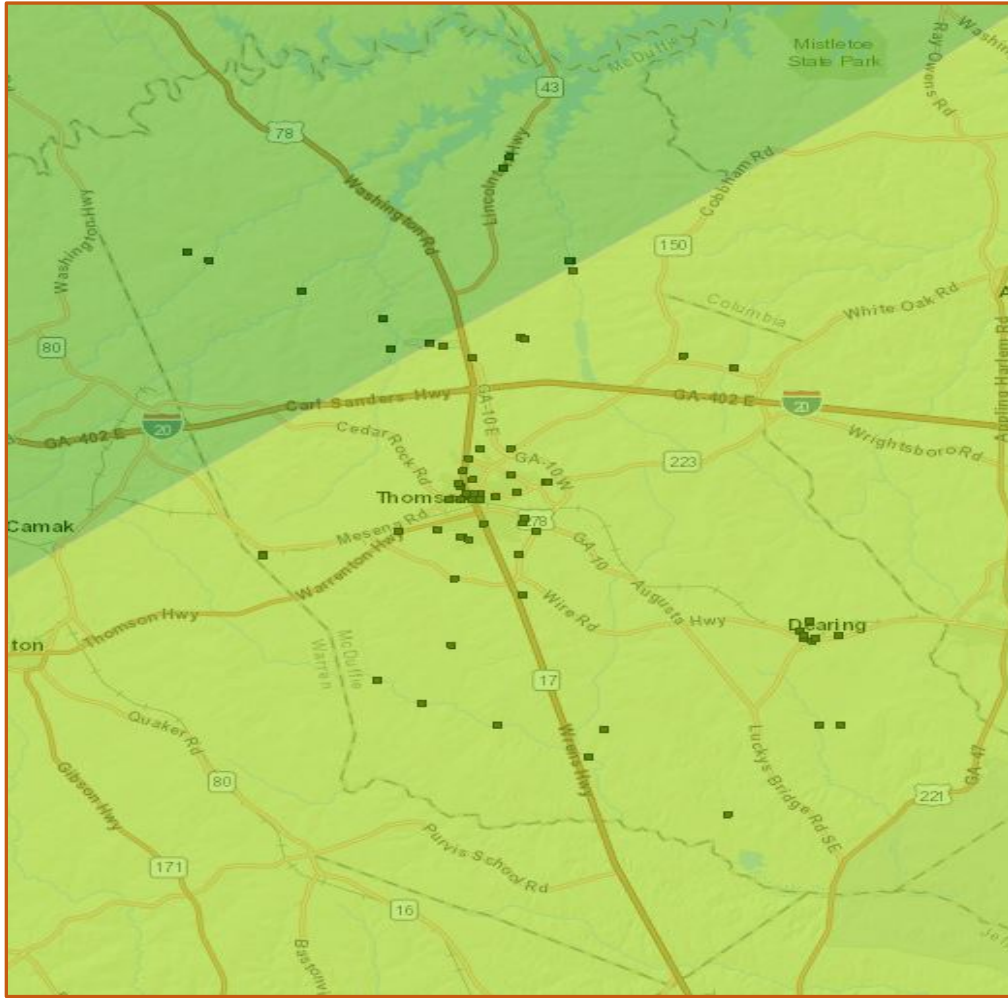
Score	Original Value	Description
5	> 120 mph	3 second gust greater than 120 mph
4	110 to 119 mph	
3	100 to 109 mph	
2	90 to 99 mph (or ZONE IV)	This score is also given to an area with Zone IV of the "Design Wind Speed Map for Community Shelters," representing an area exposed to 250 mph winds. This area is the Northwestern corner of the state.
1	< 90 mph	

Dearing, GA Wind Hazard Map from Georgia Mitigation Information System.



Score	Original Value	Description
5	> 120 mph	3 second gust greater than 120 mph
4	110 to 119 mph	
3	100 to 109 mph	
2	90 to 99 mph (or ZONE IV)	This score is also given to an area with Zone IV of the "Design Wind Speed Map for Community Shelters," representing an area exposed to 250 mph winds. This area is the Northwestern corner of the state.
1	< 90 mph	

Thomson, GA Wind Hazard Map from Georgia Mitigation Information System.



Score	Original Value	Description
5	> 120 mph	3 second gust greater than 120 mph
4	110 to 119 mph	
3	100 to 109 mph	
2	90 to 99 mph (or ZONE IV)	This score is also given to an area with Zone IV of the "Design Wind Speed Map for Community Shelters," representing an area exposed to 250 mph winds. This area is the Northwestern corner of the state.
1	< 90 mph	

TROPICAL STORMS

Tropical storms begin as tropical depressions over warm oceanic water, then develop into tropical cyclones. A tropical cyclone life span can last from a few hours to close to three weeks. Most tropical cyclones last approximately five to ten days. If the winds are under or up to 39 mph, it is a tropical depression. If winds speeds are between 39 to 73 mph, it is considered a tropical storm. Any storm with over 74 mph wind speed is called a hurricane. As a rule, hurricanes occur in the western Atlantic Ocean when warm, humid conditions are prevailing. Hurricanes are usually accompanied by excessive rain, thunder and lightning. When hurricanes make landfall, they typically slow down. Unfortunately, at that time, another danger often appears – tornados. A storm surge, which is an abnormal rise in water levels in a coastal area, usually occurs with tropical storms. McDuffie County is not likely to experience a hurricane or storm surges.

In the last 70 years there have been 19 tropical storms that have affected the county with heavy rainfall and strong wind. Although there has been no property or crop damage, roads have been flooded and downed trees have caused widespread power outages across the county. Based on a 20-year hazard frequency cycle, there is a 75% chance of an annual tropical storm event for all jurisdictions.

Location	Date	Type	Deaths	Injuries	Property Damage	Description
Countywide	6/20/1972	Hurricane Agnes	0	0	0	
Countywide	10/12/1990	Tropical Storm Marco	0	0	0	
Countywide	8/26/1995	Tropical Storm Jerry	0	0	0	
Countywide	9/23/2000	Tropical Storm Helene	0	0	0	
Countywide	6/12/2001	Tropical Storm Allison	0	0	0	
Countywide	9/14/2002	Tropical Storm Hannah	0	0	0	
Countywide	7/1/2003	Tropical Storm Bill	0	0	0	
Countywide	9/6/2004	Tropical Storm Frances	0	0	0	
Countywide	9/16/2004	Hurricane Ivan	0	0	0	
Countywide	9/26/2004	Hurricane Jeanne	0	0	0	
Countywide	6/12/2005	Tropical Storm Arlene	0	0	0	
Countywide	7/10/2005	Hurricane Dennis	0	0	0	
Countywide	8/29/2005	Hurricane Katrina	0	0	0	
Countywide	10/5/2005	Tropical Storm Tammy	0	0	0	
Countywide	8/21/2008	Tropical Storm Fay	0	0	0	
Countywide	11/10/2009	Hurricane Ida	0	0	0	
Countywide	9/4/2011	Tropical Storm Lee	0	0	0	
Countywide	9/11/2017	Hurricane Irma	0	0	0	Wind gust to 47 mph and 5.37" of rain at the Thomson-McDuffie Airport
Countywide	10/10/2018	Hurricane Michael	0	0	0	Wind gust to 41 mph at the Thomson-McDuffie Airport
			0	0	0	

Jurisdiction	Name	Hazard Score	Value	Replacement Value Year	Building size	Content value	Functional Use value	Facility type	Risk	Day	Night
Dearing town	Dearing City Hall	2	125000	2016	1000	15,000	0	Government, Government, Private, Private	Essential, Important	2	?
Dearing town	Dearing Fire Station 2	2	150000	2016	810	250,000	0	Emergency Services, Emergency Services, Fire Fighters, Fire Fighters	Essential, Lifeline	?	?
Dearing town	Fire Station #1	2	350000	2016	2400	500,000	0	Emergency Services, Emergency Services, Fire Fighters, Fire Fighters		0	0
Dearing town	Old Gym	2	455000	2016	6409	15,000	0	Emergency Services, Emergency Services, Fire Fighters, Fire Fighters	Important	?	?
McDuffie County	Bridge ID 189-0021-0/Big Brier Creek	2	350000	2010	5894		0	Government, Government, Water/Sewer, Water/Sewer	Essential, Transportation	?	?
McDuffie County	Bridge ID 189-0024-0/Big Brier Creek	2	350000	2010	6515		0	Government, Government, Water/Sewer, Water/Sewer	Essential, Transportation	?	?
McDuffie County	Bridge ID 189-0025-0/Fort Creek	2	65000	2010	576		0	Government, Government, Water/Sewer, Water/Sewer	Essential, Transportation	?	?
McDuffie County	Bridge ID 189-0029-0/Sweetwater Creek	2	75000	2010	888		0	Government, Government, Water/Sewer, Water/Sewer	Essential, Transportation	?	?
McDuffie County	Bridge ID 189-5001-0/Greenbrier Creek	2	50000	2010	576		0	Government, Government, Water/Sewer, Water/Sewer	Essential, Transportation	?	?
McDuffie County	Bridge ID 189-5004-0/Headstall Creek	2	70000	2010	888		0	Government, Water/Sewer	Essential, Transportation	?	?
McDuffie County	Bridge ID 189-5006-0/Whites Creek	2	70600	2010	1032		0	Government, Water/Sewer	Transportation	?	?
McDuffie County	Bridge ID 189-5007-0/Big Brier Creek	2	196955	2010	3539		0	Government, Water/Sewer	Essential, Transportation	2	2
McDuffie County	Bridge ID 189-5008-0/Big Brier Creek	2	95000	2010	1296		0	Government, Government, Water/Sewer, Water/Sewer	Essential, Transportation	?	?
McDuffie County	Bridge ID 189-5009-0/Little Germany Creek	2	57600	2010	552		0	Government, Water/Sewer	Transportation	?	?
McDuffie County	Bridge ID 189-5013-0/Germany Creek	2	88400	2010	1368		0	Government, Water/Sewer	Transportation	?	?
McDuffie County	Dearing Elementary School	2	4500000	2016	60528	850,000	0	Emergency Services, Emergency Services, Fire Fighters, Fire Fighters	Essential, Important, Special Consideration, Vulnerable Population	545	?
McDuffie County	Dearing Wastewater Treatment Facility	2	350000	2016	684	75,000	0	Government, Government, Water/Sewer, Water/Sewer	Essential, Hazardous Materials, Important, Lifeline	2	?
McDuffie County	J.A. Maxwell Elementary School	2	5250000	2016	58396	125,000	0	Emergency Services, Emergency Services, Fire Fighters, Fire Fighters	Essential, Important, Special Consideration	529	0
McDuffie County	Scales & Scalehouse	2	120000	2016	1500	35,000	0	NGO, NGO, Water/Sewer, Water/Sewer	Essential	2	?
McDuffie County	Transfer Station	2	165000	2016	2300	180,000	0	Education, Education, K - 12, K - 12	Essential	2	?

McDuffie County	McDuffie County Animal Shelter	2	130000	2016	1590	90,000	0	Government, Government, Private, Private	Important, Vulnerable Population	3	1
McDuffie County	McDuffie County Board of Education	2	900000	2016	9644	425,000	0	Government, Government, Water/Sewer, Water/Sewer	Essential, Important	25	2
McDuffie County	McDuffie County Courthouse	2	1750000	2016	6500	850,000	0	Law Enforcement, Law Enforcement, Court House, Court House	Essential, Important	25	2
McDuffie County	McDuffie County Fire Department Station 05	2	800000	2020	2863	700,000	0	Emergency Services, Emergency Services, Fire Fighters, Fire Fighters	Essential, Important	2	2
McDuffie County	McDuffie County Fire Department Station 06	2	800000	2020	3384	650,000	0	Emergency Services, Emergency Services, Fire Fighters, Fire Fighters	Essential, Important	2	2
McDuffie County	McDuffie County Fire Dept Station 01	2	1500000	2019	3310	1,250,000	0	Emergency Services, Emergency Services, Fire Fighters, Fire Fighters	Essential, Important	10	6
McDuffie County	McDuffie County Fire Station #3	2	800000	2020	2520	450,000	0	Emergency Services, Emergency Services, Fire Fighters, Fire Fighters	Essential, Lifeline	2	2
McDuffie County	McDuffie County Fire Station 2	2	1500000	2020	6212	1,000,000	0	Emergency Services, Emergency Services, Fire Fighters, Fire Fighters	Essential, Lifeline	4	4
McDuffie County	McDuffie County Health Department	2	600000	2016	5253	850,000	0	Government, Government, Private, Private	Essential, Important, Vulnerable Population	45	2
McDuffie County	McDuffie County Sheriff's Office	2	750000	2016	2000	300,000	0	Law Enforcement, Law Enforcement, Sheriff, Sheriff	Essential	15	10
McDuffie County	Norris Elementary School	2	7500000	2016	89611	1,500,000	0	Government, Government, Private, Private	Essential, Important	555	0
McDuffie County	Sheriff's Office - Substation	2	250000	2016	1000	10,000	0	Law Enforcement, Law Enforcement, Sheriff, Sheriff	Essential	2	2
McDuffie County	SweetWater Gymnasium	2	2475000	2016	23000	350,000	0	Emergency Services, Emergency Services, Fire Fighters, Fire Fighters	Essential, Important	150	2
McDuffie County	Thomson Elementary School	2	5500000	2016	60850	1,250,000	0	Government, Government, Private, Private	Essential, Important	661	2
McDuffie County	Thomson High School	2	9500000	2016	181588	2,200,000	0	Medical, Medical, Hospital, Hospital	Essential, Important	1003	2
McDuffie County	Thomson Land Application System	2	3000000	2016	2000		0	Government, Government, Water/Sewer, Water/Sewer	Essential, Hazardous Materials	2	2
McDuffie County	Thomson Middle School	2	8500000	2016	133700	1,750,000	0	Law Enforcement, Law Enforcement, Sheriff, Sheriff	Essential, Important, Special Consideration	653	2
McDuffie County	Thomson-McDuffie County Library	2	1500000	2016	13500	1,000,000	0	Education, Education, Library, Library	Essential, Important	300	300
McDuffie County	Thomson-McDuffie Government Complex	2	15000000	2016	70000	1,500,000	0	Government, Government, Water/Sewer, Water/Sewer	Essential	2	2
McDuffie County	Thomson-McDuffie Jr. High	2	8500000	2016	165225	2,500,000	0	Emergency Services, Emergency Services, Fire Fighters, Fire Fighters	Essential, Vulnerable Population	673	2

McDuffie County	UNiversity Medical Regional McDuffie	2	7000000	2016	25000	5,000,000	0	Medical, Medical, Hospital, Hospital		300	185
Thomson city	Augusta Highway Water Tower	2	300000	2010	1		0	Government, Water/Sewer	Essential, Lifeline	2	2
Thomson city	Bohler Street Water Tower	2	315500	2010	1		0	Government, Water/Sewer	Essential, Lifeline	2	2
Thomson city	City of Thomas Wastewater Holding Tank	2	75000	2016	814	6,500	0	Government, Government, Water/Sewer, Water/Sewer	Essential, Hazardous Materials, Important, Lifeline	2	2
Thomson city	City of Thomson Wastewater Pumphouse	2	15000	2016	104	17,000	0	Government, Government, Water/Sewer, Water/Sewer	Essential, Important, Lifeline	2	2
Thomson city	City of Thomson Water Filter Plant	2	1250000	2016	12316	450,000	0	Government, Government, Water/Sewer, Water/Sewer	Essential, Important, Lifeline	2	2
Thomson city	City of Thomson Water Filter Plant/Clear Well	2	250000	2016	2704		0	Government, Government, Water/Sewer, Water/Sewer	Essential, Important, Lifeline	2	2
Thomson city	Clark Hill Pump Station	2	200000	2016	1652	155,000	0	Government, Government, Water/Sewer, Water/Sewer	Essential, Important, Lifeline	2	2
Thomson city	CrossRoads Learning Center	2	2500000	2016	11790	300,000	0	Medical, Medical, Hospital, Hospital	Important	105	2
Thomson city	Dearing Water Tower	2	220000	2016	1		0	Government, Government, Water/Sewer, Water/Sewer	Essential, Important, Lifeline	2	2
Thomson city	Department of Family and Children Services	2	950000	2016	7800	750,000	0	Government, Government, Water/Sewer, Water/Sewer	Essential, Important, Vulnerable Population	45	2
Thomson city	Ferrous Road Water Tower	2	550000	2016	1		0	Government, Government, Water/Sewer, Water/Sewer	Essential, Important, Lifeline	2	2
Thomson city	Lumpkin Street Water Tower	2	285000	2016	1		0	Government, Government, Water/Sewer, Water/Sewer	Essential, Important, Lifeline	2	2
Thomson city	Norris Lift Station	2	100000	2016	140		0	Government, Government, Water/Sewer, Water/Sewer	Essential, Hazardous Materials, Important	2	2
Thomson city	Senior Citizens Center	2	1200000	2016	7700	750,000	0	Government, Government, Private, Private	Essential, Vulnerable Population	250	0
Thomson city	Thomson City Hall	2	450000	2016	4446	175,000	0	Government, Government, Private, Private	Essential	12	0
Thomson city	Thomson Police Department	2	500000	2016	2000	250,000	0	Law Enforcement, Law Enforcement, Police, Police	Essential, Important	18	8
Thomson city	Thomson Police Department Substation	2	185000	2016	2479	15,000	0	Law Enforcement, Law Enforcement, Police, Police	Essential, Important	2	2
Thomson city	Thomson Public Works Gas & Diesel Pump	2	20000	2016	200	50,000	0	Government, Government, Water/Sewer, Water/Sewer	Essential, Important, Lifeline	2	2
Thomson city	Thomson Public Works Gas Office	2	12000	2016	192	8,000	0	Government, Government, Water/Sewer, Water/Sewer	Essential, Hazardous Materials, Important, Lifeline	2	2
Thomson city	Thomson Public Works Maintenance Shop	2	350000	2016	6732	275,000	0	Government, Government, Water/Sewer, Water/Sewer	Essential, Important, Lifeline	2	2
Thomson city	Thomson Public Works Office	2	110000	2016	1066	35,000	0	Government, Government, Water/Sewer, Water/Sewer	Essential, Important, Lifeline	5	2

Thomson city	Thomson Public Works Storage	2	250000	2016	6450	15,000	0	Government, Government, Water/Sewer, Water/Sewer	Essential, Important, Lifeline	2	2
Thomson city	Thomson WPCP	2	1650000	2016	2931	450,000	0	Government, Government, Water/Sewer, Water/Sewer	Essential, Hazardous Materials, Lifeline	2	2
Thomson city	Thomson-McDuffie Fire Department Station 07	2	850000	2020	5472	1,350,000	0	Emergency Services, Emergency Services, Fire Fighters, Fire Fighters	Essential, Important, Lifeline	5	4
Thomson city	Warrenton Highway Water Tower	2	350000	2016	1		0	Government, Government, Water/Sewer, Water/Sewer	Essential, Important, Lifeline	2	2
McDuffie County	Bridge ID 189-0023-0/Mattox Creek	1	240000	2010	4020		0	Government, Government, Water/Sewer, Water/Sewer	Essential, Transportation	2	2
McDuffie County	Bridge ID 189-5002-0/Germany Creek	1	95000	2010	1200		0	Government, Government, Water/Sewer, Water/Sewer	Essential, Transportation	2	2
McDuffie County	Bridge ID 189-5003-0/Little Germany Creek	1	60000	2010	696		0	Government, Government, Water/Sewer, Water/Sewer	Essential, Transportation	2	2
McDuffie County	Bridge ID 189-5011-0/Hart Creek	1	58400	2010	768		0	Government, Water/Sewer	Transportation	2	2
McDuffie County	Bridge ID 189-5012-0/Chill Creek	1	54800	2010	696		0	Government, Water/Sewer	Transportation	2	2
McDuffie County	Bridge ID 189-5014-0/Mattox Creek	1	71600	2010	1032		0	Government, Water/Sewer	Transportation	2	2
McDuffie County	Bridge ID 189-5015-0/Middle Creek	1	395600	2010	7512		0	Government, Water/Sewer	Transportation	2	2
McDuffie County	McDuffie County Fire Station #4	1	850000	2020	2400	1,350,000	0	Emergency Services, Emergency Services, Fire Fighters, Fire Fighters	Essential, Lifeline	0	0
McDuffie County	Thomson-McDuffie Airport	1	9000000	2016	11253	1,500,000	0	NGO, NGO, Transportation, Transportation	Economic Assets, Essential, Transportation	10	2
Thomson city	Thomson-McDuffie Co Water Treatment Plant	1	522600	2016	8820	85,000	0	Government, Government, Water/Sewer, Water/Sewer	Essential, Important	2	2
			\$115,474,055			\$ 33,656,500.00				5978	528

SEVERE THUNDERSTORM (Wind, Hail, & Lightning)

The first severe weather event, thunderstorm winds, can cause death, injury, power outages, property damage, disrupt telephone service, and severely affect radio communications which may seriously impair the emergency management capabilities of the affected jurisdictions. Thunderstorm winds arise as a result from convection (with or without lightning), with speeds of at least 50 knots (58 mph), or winds of any speed producing a fatality, injury, or damage. Severe thunderstorms develop powerful updrafts and downdrafts. An updraft of warm, moist air helps to fuel a towering cumulonimbus cloud reaching tens of thousands of feet into the atmosphere. A downdraft of relatively cool, dense air develops as precipitation begins to fall through the cloud. Winds in the downdraft can reach in excess of 100 miles per hour. When the downdraft reaches the ground, it spreads out forming a gust front: the strong wind that kicks up just before the storm hits. As the thunderstorm moves through the area, the full force of the downdraft in a severe thunderstorm can be felt as horizontal, straight-line winds with speeds well over 50 miles per hour. Straight-line winds are often responsible for most of the damage associated with a severe thunderstorm. Damaging straight-line winds occur over a range of scales. At one extreme, a severe single-cell thunderstorm may cause localized damage from a microburst, a severe downdraft extending not more than about two miles across. In contrast, a powerful thunderstorm complex that develops as a squall line can produce damaging winds that carve a path as much as 100 miles wide and 500 miles long.

The second severe weather event is hail. Hailstones are created when strong rising currents of air called updrafts carry water droplets high into the upper reaches of thunderstorms where they freeze. These frozen water droplets fall back toward the earth in downdrafts. In their descent, these frozen droplets bump into and coalesce with unfrozen water droplets and are then carried back up high within the storm where they refreeze into larger frozen drops. This cycle may repeat itself several times until the frozen water droplets become so large and heavy that the updraft can no longer support their weight. Eventually, the frozen water droplets fall back to earth as hailstones.

Hail can also be a destructive aspect of severe thunderstorms. Hail causes more monetary loss than any other type of thunderstorm-spawned severe weather in the United States, annually producing about one billion dollars in crop damage. Storms that produce hailstones only the size of a dime can produce dents in the tops of vehicles, damage roofs, break windows and cause significant injury or even death.

The third type of severe weather events is lightning. Lightning is a giant spark of electricity in the atmosphere between clouds, the air, or the ground. In the early stages of development, air acts as an insulator between the positive and negative charges in the cloud and between the cloud and the ground. When the opposite charges build up enough, this insulating capacity of the air breaks down and there is a rapid discharge of electricity that we know as lightning. The flash of lightning temporarily equalizes the charged regions in the atmosphere until the opposite charges build up again.

Location	Date	Event	Magnitude	Deaths	Injuries	Property Damage	Crop Damage	Narrative
Countywide	5/29/1971	Hail	1	0	0	0	0	
Countywide	5/4/1974	Hail	0.75	0	0	0	0	
Countywide	10/4/1979	Hail	1.75	0	0	0	0	
Countywide	5/22/1985	Hail	1	0	0	0	0	
Countywide	6/9/1988	Hail	0.75	0	0	0	0	
Shell Bluff	5/19/1995	Hail	1.75	0	0	5000	0	
THOMSON	4/22/1997	Hail	0.75	0	0	0	0	Spotter reports 3/4 inch hail just west of Thomson.
THOMSON	5/3/1997	Hail	1.25	0	0	0	0	
THOMSON	6/20/1997	Hail	0.88	0	0	0	0	Sheriff reports nickel size hail near Georgia Highway 17 in the southern part of the county.
THOMSON	4/3/1998	Hail	0.75	0	0	0	0	
THOMSON	4/3/1998	Hail	1	0	0	0	0	
DEARING	4/8/1998	Hail	1.75	0	0	0	0	
BONEVILLE	5/13/1999	Hail	0.75	0	0	0	0	
THOMSON	3/31/2002	Hail	1	0	0	0	0	
THOMSON	5/3/2002	Hail	0.88	0	0	0	0	
THOMSON	5/3/2002	Hail	1	0	0	0	0	
THOMSON	5/10/2002	Hail	0.75	0	0	0	0	
THOMSON	5/10/2002	Hail	0.75	0	0	0	0	
THOMSON	5/6/2003	Hail	0.75	0	0	0	0	
THOMSON	7/21/2003	Hail	0.75	0	0	0	0	
THOMSON	1/13/2005	Hail	0.75	0	0	0	0	
THOMSON	2/21/2005	Hail	1	0	0	0	0	
THOMSON	3/31/2005	Hail	0.75	0	0	0	0	
THOMSON	4/3/2006	Hail	0.88	0	0	0	0	
THOMSON	4/19/2006	Hail	0.88	0	0	0	0	
THOMSON	6/5/2007	Hail	0.75	0	0	0	0	Pulse storms developed over much of the CWA producing large hail and many

DEARING	3/15/2008	Hail	0.88	0	0	0	0	0	Three supercells tracked across portions of the GA CSRA and produce multiple long-lived tornadoes that produced significant damage.
DEARING	5/20/2008	Hail	0.75	0	0	0	0	0	A couple of supercells moved through the CSRA and produced large hail, damaging winds, and one tornado.
THOMSON	6/11/2011	Hail	0.88	0	0	0	0	0	An isolated severe thunderstorm produced some wind damage and hail in
DEARING	7/1/2012	Hail	1.75	0	15	10000	0	0	Several severe thunderstorms developed over the CSRA producing large hail and wind damage. Hail sizes were mostly quarter to golfball size. The Insurance News Service reported 1 to 2 million dollars
THOMSON	7/1/2012	Hail	1.25	0	0	15000	15000	15000	Several severe thunderstorms developed over the CSRA producing large hail and wind damage. Hail sizes were mostly quarter to golfball size. The Insurance News Service reported 1 to 2 million dollars
THOMSON	7/1/2012	Hail	1.25	0	0	10000	10000	10000	Several severe thunderstorms developed over the CSRA producing large hail and wind damage. Hail sizes were mostly quarter to golfball size. The Insurance News Service reported 1 to 2 million dollars

WRIGHTSBORO	7/27/2012	Hail	0.88	0	0	0	0	0	0	Scattered severe thunderstorms produced some large hail and damaging winds around the CSRA.
THOMSON	5/21/2013	Hail	1	0	0	0	0	0	0	A couple of isolated severe thunderstorms produced some large hail.
DEARING	8/20/2014	Hail	1	0	0	0	0	0	0	A thunderstorm in lower McDuffie County produced some nickel to quarter size hail and broke some large branches off of trees.
THOMSON	6/24/2015	Hail	1	0	0	0	0	0	0	A line of thunderstorms moved through the CSRA causing some wind damage...mainly to trees and utility lines.
BONEVILLE	4/7/2016	Hail	0.88	0	0	0	0	0	0	A Squall Line developed ahead of an approaching cold front. The squall line moved across the Central Savannah River Area. The strong winds damaged a few trees and produced some nickel size hail.
THOMSON	7/8/2016	Hail	0.88	0	0	0	0	0	0	An upper disturbance contributed to the formation of a band of scattered severe thunderstorms that swept through the region on the evening and early nighttime of July 8.
WRIGHTSBORO	6/11/2018	Hail	1.75	0	0	0	0	0	0	Strong daytime heating, and surface boundaries, produced scattered severe thunderstorms in the

Location	Date	Type	Deaths	Injuries	Property Damage	Description
Countywide	9/10/1983	Thunderstorm Wind	0	0	0	
Countywide	4/9/1991	Thunderstorm Wind	0	0	0	
Countywide	4/19/1991	Thunderstorm Wind	0	0	0	
Countywide	7/1/1992	Thunderstorm Wind	0	0	0	
Countywide	7/5/1992	Thunderstorm Wind	0	0	0	
Countywide	8/17/1992	Thunderstorm Wind	0	0	0	
Countywide	10/12/1994	Thunderstorm Wind	0	0	5000	Four inches of rain combined with gusty winds to produce waves which caused \$1000 of damage to boats at the Raysville Marina.
Thomson	5/14/1995	Thunderstorm Wind	0	0	25000	Thunderstorm winds pulled a tin roof off of a Mr. Muffer and also knocked down several large tree limbs.
THOMSON	1/27/1996	Thunderstorm Wind	0	0	0	
THOMSON	7/21/1996	Thunderstorm Wind	0	0	0	
THOMSON	4/22/1997	Thunderstorm Wind	0	0	2750000	
THOMSON	6/16/1998	Thunderstorm Wind	0	0	0	Sheriff reported trees down.

THOMSON	6/19/1998	Thunderstorm Wind	0	0	0	0	Sheriff reported trees down.
DEARING	9/8/1998	Thunderstorm Wind	0	0	0	0	EPD reported trees down in Dearing.
THOMSON	9/8/1998	Thunderstorm Wind	0	0	0	0	EPD reported trees down in Thomson.
THOMSON	5/6/1999	Thunderstorm Wind	0	0	0	0	EOC reported trees down across northern McDuffie county.
THOMSON	1/10/2000	Thunderstorm Wind	0	0	12000	0	Sheriff reported a few trees down in Raysville. One fell on a car and totalled it.
THOMSON	1/19/2001	Thunderstorm Wind	0	0	0	0	Sheriff reported numerous trees down in the area.
THOMSON	5/13/2002	Thunderstorm Wind	0	0	12000	0	Sheriff reported trees down on cars.
COUNTYWIDE	2/22/2003	Thunderstorm Wind	0	0	0	0	EOC reported trees down countywide.
THOMSON	5/1/2003	Thunderstorm Wind	0	0	0	0	Sheriff reported trees down in Thomson on Quail road.
COUNTYWIDE	5/2/2003	Thunderstorm Wind	0	0	0	0	Sheriff reported trees down across the county.
THOMSON	11/19/2003	Thunderstorm Wind	0	0	0	0	Highway dept reported trees down.
THOMSON	6/25/2004	Thunderstorm Wind	0	0	0	0	Sheriff reported several trees and powerlines down in and around Thomson.
THOMSON	11/24/2004	Thunderstorm Wind	0	0	0	0	Post Office reports trees and powerlines down in Raysville.

THOMSON	3/2/2007	Thunderstorm Wind	0	0	0	Sheriff reported many trees down across the northern portions of the county.
THOMSON	6/5/2007	Thunderstorm Wind	0	0	0	SKYWARN spotter reported large limbs down in Thomson.
THOMSON	7/1/2007	Thunderstorm Wind	0	0	0	Sheriff reported trees down on hwy 17S.
BONEVILLE	4/10/2009	Thunderstorm Wind	0	0	8000	McDuffie County paper reported a couple of trees down and a mobile home moved off the foundation by several feet on May road.
BONEVILLE	4/10/2009	Thunderstorm Wind	0	0	1000	Paper reported a mobile home was moved 2 feet off its foundation.
Countywide	8/5/2009	Thunderstorm Wind	0	0	4000	DOT reported trees down on Stagecoach and MacElroy roads.
Countywide	8/5/2009	Thunderstorm Wind	0	0	2000	Chevron gas station on hwy 78 at I-20 reported trees down along the highway.
THOMSON	6/25/2010	Thunderstorm Wind	0	0	8000	Sheriff reported trees down on Wrightsboro road and Harrison road.
BONEVILLE	7/26/2010	Thunderstorm Wind	0	0	6000	Jefferson Electric reported trees and large limbs down on powerlines in the vicinity of Happy Valley and Fort Creek roads.

THOMSON	7/27/2010	Thunderstorm Wind	0	0	24000	Sheriff reported trees down in Thomson, one was on a car that did moderate damage to it.
THOMSON	11/30/2010	Thunderstorm Wind	0	0	4000	Sheriff reported trees and powerlines down on Central road.
THOMSON	4/5/2011	Thunderstorm Wind	0	0	24000	Sheriff reported numerous trees and powerlines down across McDuffie County.
Countywide	6/9/2011	Thunderstorm Wind	0	0	2000	Public reported a few trees down along Hwy 150 near Fish Dam road.
THOMSON	6/9/2011	Thunderstorm Wind	0	0	2000	Sheriff reported a couple of trees down along Mt. Pleasant Road in Thomson.
THOMSON	6/11/2011	Thunderstorm Wind	0	0	2000	WRDW reported several trees down in Thomson.
THOMSON	6/15/2011	Thunderstorm Wind	0	0	18000	Sheriff reported trees and powerlines down county wide.
BONEVILLE	6/18/2011	Thunderstorm Wind	0	0	3000	Public reported trees down on Hwy 78 southeast of Thomson.
BONEVILLE	6/28/2011	Thunderstorm Wind	0	0	2000	Sheriff reported a tree blocking Wire road. A few others were down along the side of the road.
BONEVILLE	6/28/2011	Thunderstorm Wind	0	0	0	Sheriff dispatch reported a tree blocking Wire Rd.
THOMSON	6/28/2011	Thunderstorm Wind	0	0	0	Highway reported trees down in southeast McDuffie County.

DEARING	10/13/2011	Thunderstorm Wind	0	0	0	0	Many limbs...trees and powerlines down countywide. The Dearing area was hit the hardest.
THOMSON	10/13/2011	Thunderstorm Wind	0	0	15000	WRDW reported a tree down on a mobile home near Thomson.	
DEARING	2/24/2012	Thunderstorm Wind	0	0	20000	Sheriff reported numerous trees down across southern McDuffie county.	
DEARING	4/19/2013	Thunderstorm Wind	0	0	4000	McDuffie dispatch reported several trees down in Darning heading toward Harlem.	
BONEVILLE	7/17/2013	Thunderstorm Wind	0	0	3000	Sheriff reported trees down along Quail Farm Road.	
DEARING	7/17/2013	Thunderstorm Wind	0	0	6000	Sheriff reported trees and powerlines down along Hobbs Mill Road in Dearing.	
Countywide	8/8/2014	Thunderstorm Wind	0	0	4000	Sheriff reported trees down on Lincolnton Hwy and Washington Road. Several accidents on I-20 as well.	
WRIGHTSBORO	10/14/2014	Thunderstorm Wind	0	0	2000	SKYWARN spotter driving along I-20 NNE of Thomson reported a few trees down along the interstate and that intense winds knocked down the magnetic antenna mount on his car.	

DEARING	6/9/2015	Thunderstorm Wind	0	0	3000	McDuffie County DOT reported several trees down along Wellmaker Road near Dearing.
THOMSON	6/24/2015	Thunderstorm Wind	0	0	4000	Sheriff reported several trees down and 1 inch hail.
DEARING	6/27/2015	Thunderstorm Wind	0	0	8000	Sheriff reported trees and powerlines down near Dearing.
Countywide	8/6/2015	Thunderstorm Wind	0	0	4000	Public reported trees down along the Lincolnton Highway and Fish Dam Road.
DEARING	8/6/2015	Thunderstorm Wind	0	0	3000	Utility company and public reported large branches and power lines down south of Dearing near the county line. Power was out for about 3 hours.
Countywide	8/30/2015	Thunderstorm Wind	0	0	12000	Sheriff reported trees and powerlines down along Stagecoach Road.
Countywide	8/30/2015	Thunderstorm Wind	0	0	12000	Sheriff reported trees and powerlines down along Hwy 43.
Countywide	6/17/2016	Thunderstorm Wind	0	0	0	Broadcast Media displayed images of trees and power lines down on Wrightsboro Rd.
THOMSON	7/5/2016	Thunderstorm Wind	0	0	0	Dispatch reported trees down on power lines on Michael Street in Thomson.

THOMSON	7/6/2016	Thunderstorm Wind	0	0	0	0	McDuffie County dispatch reported power lines down on Dogwood Dr at Magnolia Dr in Thomson.
THOMSON	7/8/2016	Thunderstorm Wind	0	0	0	0	Tree down on a power line in Thomson.
THOMSON	3/21/2017	Thunderstorm Wind	0	0	0	0	Thunderstorm wind gusts downed two trees into a yard.
Countywide	7/23/2017	Thunderstorm Wind	0	0	0	0	Tree in roadway on Lincoln Hwy at the McDuffie and Lincoln County line.
THOMSON	3/20/2018	Thunderstorm Wind	0	0	0	0	Highway Dept reported a tree down near the intersection of Warrenton Hwy and Plyant Crossing Rd.
DEARING	6/1/2018	Thunderstorm Wind	0	0	0	0	Trees reported down on Iron Hill Rd. Time estimated based on radar.
BONEVILLE	6/26/2018	Thunderstorm Wind	0	0	0	0	Trees down along Howard Rd and White Oak Rd.
Countywide	6/20/2019	Thunderstorm Wind	0	0	0	0	The AWOS unit at Thomson-McDuffie Co Airport measured a wind gust of 60 knots (69 mph) at 1635 EDT (1535 EST).
Countywide	6/22/2019	Thunderstorm Wind	0	0	0	0	Numerous trees down along Lincoln Hwy and North Fish Dam Rd.

THOMSON	1/11/2020	Thunderstorm Wind	0	0	0	0	Reports of trees and power lines down throughout McDuffie Co GA. Times estimated. Exact locations unknown.
DEARING	2/6/2020	Thunderstorm Wind	0	0	0	0	Trees down along N Main St in Dearing. Time estimated.
WRIGHTSBORO	2/13/2020	Thunderstorm Wind	0	0	0	0	Trees were downed, taking down a power line, along Wrightsboro Rd near Ridgeview Rd.
BONEVILLE	4/13/2020	Thunderstorm Wind	0	0	0	0	Trees and power lines down west of Dearing near Hobbs Mill Rd and also near Wire Rd and Augusta Hwy. Other trees were reported down across the western half of McDuffie Co.
Countywide	6/27/2020	Thunderstorm Wind	0	0	100	0	AWOS unit at Thomson McDuffie Co Airport measured a peak wind gust of 54 mph at 1855 EDT (1755 EST).
WRIGHTSBORO	8/5/2020	Thunderstorm Wind	0	0	0	0	A tree was downed onto power lines on Ginger Hill Rd. Time estimated.
			0	0		\$ 3,014,100.00	

Jurisdiction	Name	Hazard Score	Value	Replacement Value Year	Building size	Content value	Functional Use value	Facility type	Risk	Day	Night
Dearing town	Dearing City Hall	2	125000	2016	1000	15,000	0	Government, Government, Private, Private	Essential, Important	2	?
Dearing town	Dearing Fire Station 2	2	150000	2016	810	250,000	0	Emergency Services, Emergency Services, Fire Fighters, Fire Fighters	Essential, Lifeline	?	?
Dearing town	Fire Station #1	2	350000	2016	2400	500,000	0	Emergency Services, Emergency Services, Fire Fighters, Fire Fighters		0	0
Dearing town	Old Gym	2	455000	2016	6409	15,000	0	Emergency Services, Emergency Services, Fire Fighters, Fire Fighters	Important	?	?
McDuffie County	Bridge ID 189-0021-0/Big Brier Creek	2	350000	2010	5894		0	Government, Government, Water/Sewer, Water/Sewer	Essential, Transportation	?	?
McDuffie County	Bridge ID 189-0024-0/Big Brier Creek	2	350000	2010	6515		0	Government, Government, Water/Sewer, Water/Sewer	Essential, Transportation	?	?
McDuffie County	Bridge ID 189-0025-0/Fort Creek	2	65000	2010	576		0	Government, Government, Water/Sewer, Water/Sewer	Essential, Transportation	?	?
McDuffie County	Bridge ID 189-0029-0/Sweetwater Creek	2	75000	2010	888		0	Government, Government, Water/Sewer, Water/Sewer	Essential, Transportation	?	?
McDuffie County	Bridge ID 189-5001-0/Greenbrier Creek	2	50000	2010	576		0	Government, Government, Water/Sewer, Water/Sewer	Essential, Transportation	?	?
McDuffie County	Bridge ID 189-5004-0/Headstall Creek	2	70000	2010	888		0	Government, Water/Sewer	Essential, Transportation	?	?
McDuffie County	Bridge ID 189-5006-0/Whites Creek	2	70600	2010	1032		0	Government, Water/Sewer	Transportation	?	?
McDuffie County	Bridge ID 189-5007-0/Big Brier Creek	2	196955	2010	3539		0	Government, Water/Sewer	Essential, Transportation	2	2
McDuffie County	Bridge ID 189-5008-0/Big Brier Creek	2	95000	2010	1296		0	Government, Government, Water/Sewer, Water/Sewer	Essential, Transportation	?	?
McDuffie County	Bridge ID 189-5009-0/Little Germany Creek	2	57600	2010	552		0	Government, Water/Sewer	Transportation	?	?
McDuffie County	Bridge ID 189-5013-0/Germany Creek	2	88400	2010	1368		0	Government, Water/Sewer	Transportation	?	?
McDuffie County	Dearing Elementary School	2	4500000	2016	60528	850,000	0	Emergency Services, Emergency Services, Fire Fighters, Fire Fighters	Essential, Important, Special Consideration, Vulnerable Population	545	?
McDuffie County	Dearing Wastewater Treatment Facility	2	350000	2016	684	75,000	0	Government, Government, Water/Sewer, Water/Sewer	Essential, Hazardous Materials, Important, Lifeline	2	?
McDuffie County	J.A. Maxwell Elementary School	2	5250000	2016	58396	125,000	0	Emergency Services, Emergency Services, Fire Fighters, Fire Fighters	Essential, Important, Special Consideration	529	0
McDuffie County	Scales & Scalehouse	2	120000	2016	1500	35,000	0	NGO, NGO, Water/Sewer, Water/Sewer	Essential	2	?
McDuffie County	Transfer Station	2	165000	2016	2300	180,000	0	Education, Education, K - 12, K - 12	Essential	2	?

McDuffie County	McDuffie County Animal Shelter	2	130000	2016	1590	90,000	0	Government, Government, Private, Private	Important, Vulnerable Population	3	1
McDuffie County	McDuffie County Board of Education	2	900000	2016	9644	425,000	0	Government, Government, Water/Sewer, Water/Sewer	Essential, Important	25	2
McDuffie County	McDuffie County Courthouse	2	1750000	2016	6500	850,000	0	Law Enforcement, Law Enforcement, Court House, Court House	Essential, Important	25	2
McDuffie County	McDuffie County Fire Department Station 05	2	800000	2020	2863	700,000	0	Emergency Services, Emergency Services, Fire Fighters, Fire Fighters	Essential, Important	2	2
McDuffie County	McDuffie County Fire Department Station 06	2	800000	2020	3384	650,000	0	Emergency Services, Emergency Services, Fire Fighters, Fire Fighters	Essential, Important	2	2
McDuffie County	McDuffie County Fire Dept Station 01	2	1500000	2019	3310	1,250,000	0	Emergency Services, Emergency Services, Fire Fighters, Fire Fighters	Essential, Important	10	6
McDuffie County	McDuffie County Fire Station #3	2	800000	2020	2520	450,000	0	Emergency Services, Emergency Services, Fire Fighters, Fire Fighters	Essential, Lifeline	2	2
McDuffie County	McDuffie County Fire Station 2	2	1500000	2020	6212	1,000,000	0	Emergency Services, Emergency Services, Fire Fighters, Fire Fighters	Essential, Lifeline	4	4
McDuffie County	McDuffie County Health Department	2	600000	2016	5253	850,000	0	Government, Government, Private, Private	Essential, Important, Vulnerable Population	45	2
McDuffie County	McDuffie County Sheriff's Office	2	750000	2016	2000	300,000	0	Law Enforcement, Law Enforcement, Sheriff, Sheriff	Essential	15	10
McDuffie County	Norris Elementary School	2	7500000	2016	89611	1,500,000	0	Government, Government, Private, Private	Essential, Important	555	0
McDuffie County	Sheriff's Office - Substation	2	250000	2016	1000	10,000	0	Law Enforcement, Law Enforcement, Sheriff, Sheriff	Essential	2	2
McDuffie County	SweetWater Gymnasium	2	2475000	2016	23000	350,000	0	Emergency Services, Emergency Services, Fire Fighters, Fire Fighters	Essential, Important	150	2
McDuffie County	Thomson Elementary School	2	5500000	2016	60850	1,250,000	0	Government, Government, Private, Private	Essential, Important	661	2
McDuffie County	Thomson High School	2	9500000	2016	181588	2,200,000	0	Medical, Medical, Hospital, Hospital	Essential, Important	1003	2
McDuffie County	Thomson Land Application System	2	3000000	2016	2000		0	Government, Government, Water/Sewer, Water/Sewer	Essential, Hazardous Materials	2	2
McDuffie County	Thomson Middle School	2	8500000	2016	133700	1,750,000	0	Law Enforcement, Law Enforcement, Sheriff, Sheriff	Essential, Important, Special Consideration	653	2
McDuffie County	Thomson-McDuffie County Library	2	1500000	2016	13500	1,000,000	0	Education, Education, Library, Library	Essential, Important	300	300
McDuffie County	Thomson-McDuffie Government Complex	2	15000000	2016	70000	1,500,000	0	Government, Government, Water/Sewer, Water/Sewer	Essential	2	2
McDuffie County	Thomson-McDuffie Jr. High	2	8500000	2016	165225	2,500,000	0	Emergency Services, Emergency Services, Fire Fighters, Fire Fighters	Essential, Vulnerable Population	673	2

McDuffie County	UNiversity Medical Regional McDuffie	2	7000000	2016	25000	5,000,000	0	Medical, Medical, Hospital, Hospital		300	185
Thomson city	Augusta Highway Water Tower	2	300000	2010	1		0	Government, Water/Sewer	Essential, Lifeline	2	2
Thomson city	Bohler Street Water Tower	2	315500	2010	1		0	Government, Water/Sewer	Essential, Lifeline	2	2
Thomson city	City of Thomas Wastewater Holding Tank	2	75000	2016	814	6,500	0	Government, Government, Water/Sewer, Water/Sewer	Essential, Hazardous Materials, Important, Lifeline	2	2
Thomson city	City of Thomson Wastewater Pumphouse	2	15000	2016	104	17,000	0	Government, Government, Water/Sewer, Water/Sewer	Essential, Important, Lifeline	2	2
Thomson city	City of Thomson Water Filter Plant	2	1250000	2016	12316	450,000	0	Government, Government, Water/Sewer, Water/Sewer	Essential, Important, Lifeline	2	2
Thomson city	City of Thomson Water Filter Plant/Clear Well	2	250000	2016	2704		0	Government, Government, Water/Sewer, Water/Sewer	Essential, Important, Lifeline	2	2
Thomson city	Clark Hill Pump Station	2	200000	2016	1652	155,000	0	Government, Government, Water/Sewer, Water/Sewer	Essential, Important, Lifeline	2	2
Thomson city	CrossRoads Learning Center	2	2500000	2016	11790	300,000	0	Medical, Medical, Hospital, Hospital	Important	105	2
Thomson city	Dearing Water Tower	2	220000	2016	1		0	Government, Government, Water/Sewer, Water/Sewer	Essential, Important, Lifeline	2	2
Thomson city	Department of Family and Children Services	2	950000	2016	7800	750,000	0	Government, Government, Water/Sewer, Water/Sewer	Essential, Important, Vulnerable Population	45	2
Thomson city	Ferrous Road Water Tower	2	550000	2016	1		0	Government, Government, Water/Sewer, Water/Sewer	Essential, Important, Lifeline	2	2
Thomson city	Lumpkin Street Water Tower	2	285000	2016	1		0	Government, Government, Water/Sewer, Water/Sewer	Essential, Important, Lifeline	2	2
Thomson city	Norris Lift Station	2	100000	2016	140		0	Government, Government, Water/Sewer, Water/Sewer	Essential, Hazardous Materials, Important	2	2
Thomson city	Senior Citizens Center	2	1200000	2016	7700	750,000	0	Government, Government, Private, Private	Essential, Vulnerable Population	250	0
Thomson city	Thomson City Hall	2	450000	2016	4446	175,000	0	Government, Government, Private, Private	Essential	12	0
Thomson city	Thomson Police Department	2	500000	2016	2000	250,000	0	Law Enforcement, Law Enforcement, Police, Police	Essential, Important	18	8
Thomson city	Thomson Police Department Substation	2	185000	2016	2479	15,000	0	Law Enforcement, Law Enforcement, Police, Police	Essential, Important	2	2
Thomson city	Thomson Public Works Gas & Diesel Pump	2	20000	2016	200	50,000	0	Government, Government, Water/Sewer, Water/Sewer	Essential, Important, Lifeline	2	2
Thomson city	Thomson Public Works Gas Office	2	12000	2016	192	8,000	0	Government, Government, Water/Sewer, Water/Sewer	Essential, Hazardous Materials, Important, Lifeline	2	2
Thomson city	Thomson Public Works Maintenance Shop	2	350000	2016	6732	275,000	0	Government, Government, Water/Sewer, Water/Sewer	Essential, Important, Lifeline	2	2
Thomson city	Thomson Public Works Office	2	110000	2016	1066	35,000	0	Government, Government, Water/Sewer, Water/Sewer	Essential, Important, Lifeline	5	2

Thomson city	Thomson Public Works Storage	2	250000	2016	6450	15,000	0	Government, Government, Water/Sewer, Water/Sewer	Essential, Important, Lifeline	2	2
Thomson city	Thomson WPCP	2	1650000	2016	2931	450,000	0	Government, Government, Water/Sewer, Water/Sewer	Essential, Hazardous Materials, Lifeline	2	2
Thomson city	Thomson-McDuffie Fire Department Station 07	2	850000	2020	5472	1,350,000	0	Emergency Services, Emergency Services, Fire Fighters, Fire Fighters	Essential, Important, Lifeline	5	4
Thomson city	Warrenton Highway Water Tower	2	350000	2016	1		0	Government, Government, Water/Sewer, Water/Sewer	Essential, Important, Lifeline	2	2
McDuffie County	Bridge ID 189-0023-0/Mattox Creek	1	240000	2010	4020		0	Government, Government, Water/Sewer, Water/Sewer	Essential, Transportation	2	2
McDuffie County	Bridge ID 189-5002-0/Germany Creek	1	95000	2010	1200		0	Government, Government, Water/Sewer, Water/Sewer	Essential, Transportation	2	2
McDuffie County	Bridge ID 189-5003-0/Little Germany Creek	1	60000	2010	696		0	Government, Government, Water/Sewer, Water/Sewer	Essential, Transportation	2	2
McDuffie County	Bridge ID 189-5011-0/Hart Creek	1	58400	2010	768		0	Government, Water/Sewer	Transportation	2	2
McDuffie County	Bridge ID 189-5012-0/Chill Creek	1	54800	2010	696		0	Government, Water/Sewer	Transportation	2	2
McDuffie County	Bridge ID 189-5014-0/Mattox Creek	1	71600	2010	1032		0	Government, Water/Sewer	Transportation	2	2
McDuffie County	Bridge ID 189-5015-0/Middle Creek	1	395600	2010	7512		0	Government, Water/Sewer	Transportation	2	2
McDuffie County	McDuffie County Fire Station #4	1	850000	2020	2400	1,350,000	0	Emergency Services, Emergency Services, Fire Fighters, Fire Fighters	Essential, Lifeline	0	0
McDuffie County	Thomson-McDuffie Airport	1	9000000	2016	11253	1,500,000	0	NGO, NGO, Transportation, Transportation	Economic Assets, Essential, Transportation	10	2
Thomson city	Thomson-McDuffie Co Water Treatment Plant	1	522600	2016	8820	85,000	0	Government, Government, Water/Sewer, Water/Sewer	Essential, Important	2	2
			\$115,474,055			\$ 33,656,500.00				5978	528

WINTER STORMS

Southeastern snow or ice storms often form when an area of low pressure moves eastward across the northern Gulf of Mexico. To produce a significant winter storm in the south, not only must temperatures be cold enough, but there must also be enough moisture in the atmosphere to produce adequate precipitation. A major winter storm can last for several days and be accompanied by ice and freezing rain, high winds, heavy snowfall, and cold temperatures. These conditions can make driving very dangerous, as well as bring down trees and power lines.

There have been 28 winter storm events recorded in the county over the last 70 years with no property damaged reported. Damage from these events totals over \$360 thousand. There is a 45 percent chance of an annual winter storm event. Winter storms can be more accurately predicted than most other natural hazards, making it possible to give advance warning to communities. The National Weather Service issues winter storm warnings and advisories as these storms make their way south. Given the infrequency of these types of storms, southern communities are still not properly equipped to sustain the damage and destruction caused by severe winter storms. To summarize, there are approximately 32,429 structures/properties in the county totaling nearly \$1.9 billion with a population of 21,455. The committee recognized the dangers posed by winter storms and identified specific mitigation actions in Chapter III, Section VI.

Location	Date	Type	Deaths	Injuries	Property Damage	Description
Countywide	3/1/1960	Winterstorm	0	0	208,333	
Countywide	1/1/1961	Winterstorm	0	0	629	
Countywide	12/1/1962	Winterstorm	0	0	314	
Countywide	1/1/1963	Winterstorm	0	0	31	
Countywide	12/1/1963	Winterstorm	0	0	62,893	
Countywide	1/1/1964	Winterstorm	0	0	6	
Countywide	3/1/1964	Winterstorm	0	0	31	
Countywide	1/1/1965	Winterstorm	0	0	88	
Countywide	2/1/1965	Winterstorm	0	0	629	
Countywide	1/1/1966	Winterstorm	0	0	804	
Countywide	2/1/1968	Winterstorm	0	0	88	
Countywide	1/1/1970	Winterstorm	0	0	314	
Countywide	2/1/1973	Winterstorm	0	0	40,000	
Countywide	1/1/1977	Winterstorm	0	0	31,447	
Countywide	2/1/1979	Winterstorm	0	0	10,417	
Countywide	2/1/1980	Winterstorm	0	0	549	
Countywide	1/1/1983	Winterstorm	0	0	5,208	
Countywide	1/1/1992	Winterstorm	0	0	13	
Countywide	1/1/1994	Winterstorm	0	0	578	
Countywide	1/2/2002	Winterstorm	0	0	0	A mixture of freezing rain, sleet, and snow fell in McDuffie county. Ice accumulations were 1/4 to 1/2 inch and snow accumulations were 3 to 5 inches.

Countywide	1/26/2004	Winterstorm	0	0	0	An ice storm developed over the CSRA late Sunday night and Monday and produced 1/4-3/4 inch of ice. The heaviest ice accumulations occurred in Lincoln, Columbia, and McDuffie counties. Many trees and powerlines were down causing scattered power outages. About 100,000 homes were without power for several days. Four people were injured in traffic related accidents and one person was killed in Loncoln county when a tree fell on his vehicle.
Countywide	12/26/2004	Winterstorm	0	0	0	An ice storm produced 1/4 to 3/4 inch of ice and sleet taking down trees and powerlines. Several power outages were reported along with numerous traffic accidents.

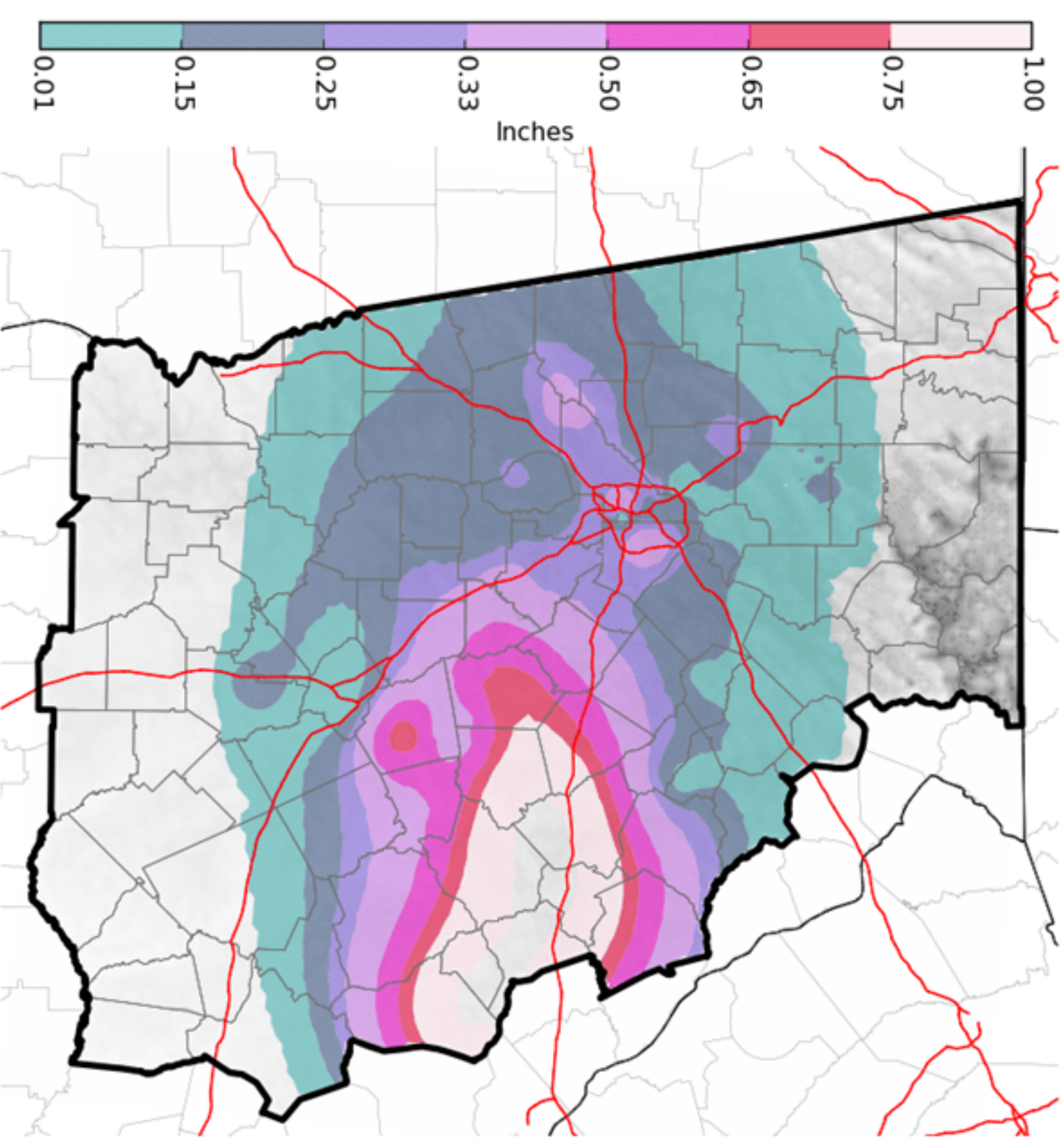
Countywide	1/29/2005	Winterstorm	0	0	0	An ice storm started late Friday night and continued off and on through Saturday night. Most areas received a quarter of an inch of ice on trees and other structures. Some areas received a quarter to a half an inch of ice. These areas had some power outages which were of short duration. Overpasses and bridges iced up but ground temperatures of roadways kept the rain from freezing on them. Still, there were many accidents from people losing control when driving over the bridges and overpasses.
Countywide	2/12/2010	Winterstorm	0	0	0	EMI reported 3-5 inches of snow across the county.
Countywide	12/26/2010	Winterstorm	0	0	0	Law Enforcement and trained spotters reported 1 to 2 inches of snow across the northern half of the county.
Countywide	1/10/2011	Winterstorm	0	0	0	Fire Dept. HI reported total snow accumulation of 2 to 3 inches in the northern portion of the county with 1 to 2 inches in the southern part. The snow was followed by freezing rain and drizzle with ice accumulations of 1/4 to 1/2 inch. Some power outages were also reported.

Countywide	1/28/2014	Winterstorm	0	0	0	A winter storm produced sleet and snow across McDuffie County causing hazardous traveling conditions. Snow/sleet accumulations ranged from 1 to 3 inches across the county.
Countywide	2/12/2014	Winterstorm	0	0	0	A major Ice Storm produced 1/2 to 3/4 inch of ice and around 2 inches of snow and sleet across McDuffie County taking down numerous trees and powerlines. Power outages were widespread across the county affecting most of the population.
			0	0	\$ 362,374.38	



Comparison of Freezing Rain Forecast vs. Observed Accumulations

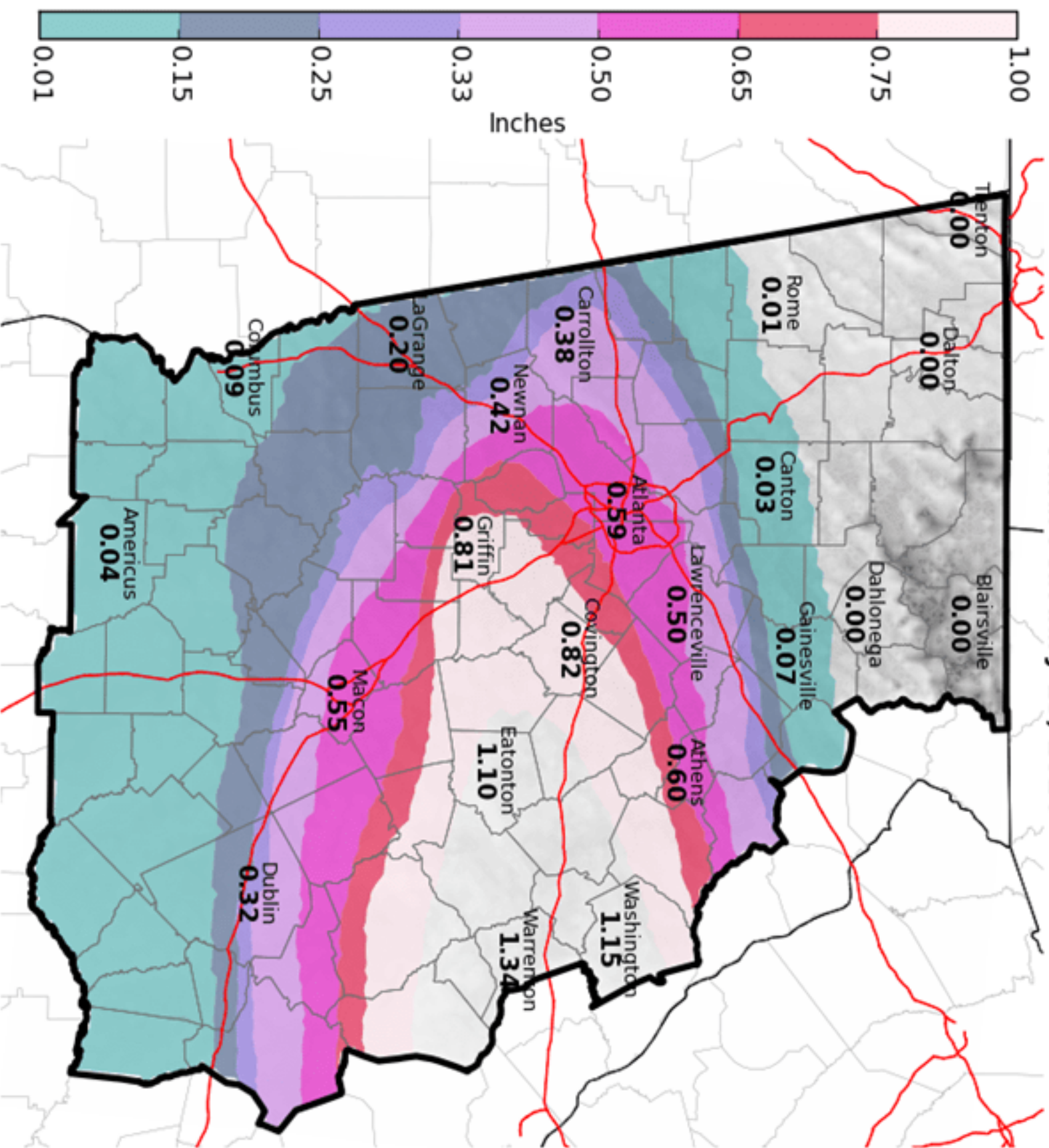
Preliminary Ice Totals through 11 AM Feb. 13



National Weather Service
Peachtree City, GA
02/13/2014 03:50 PM EST

Follow Us:
[f](#) [t](#) [You Tube](#)
weather.gov/atlanta

Storm Total Ice
Valid: February 13, 2014



National Weather Service
Peachtree City, GA
02/12/2014 02:36 AM EST

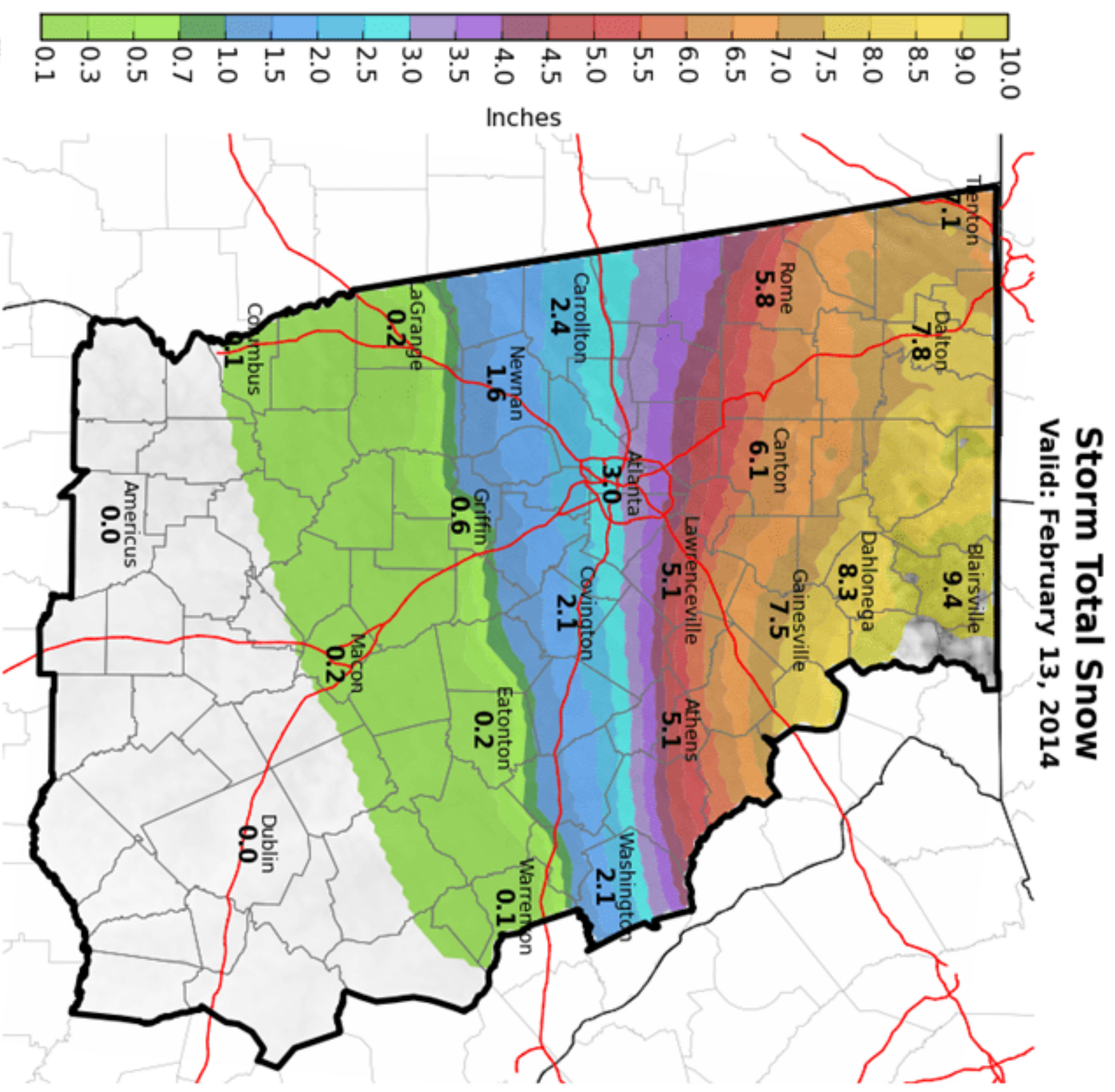
Follow Us:
[f](#) [t](#) [You Tube](#)
weather.gov/atlanta

Forecast

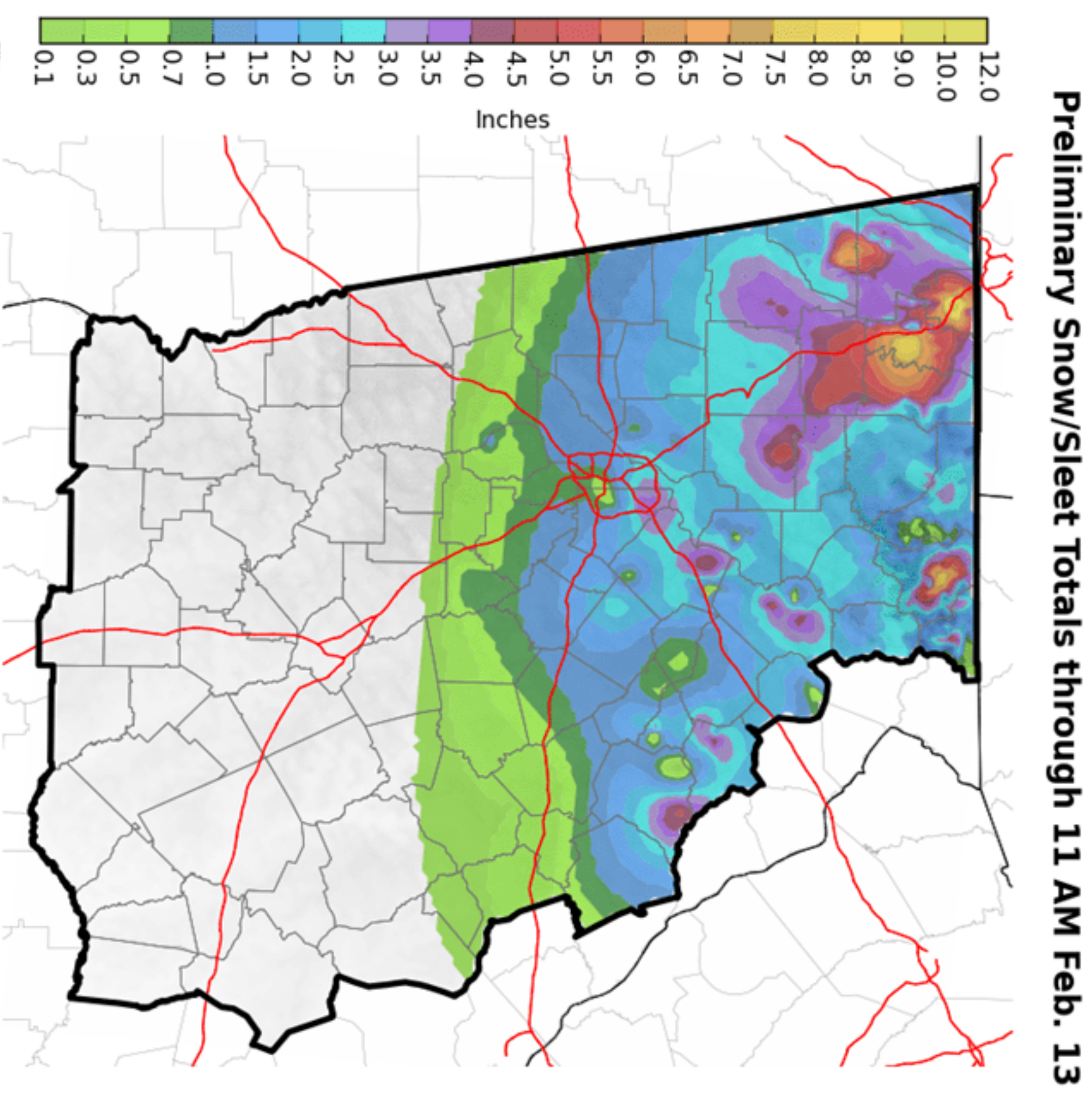
Observed



Comparison of Snow and Sleet Forecast vs. Observed Accumulations



National Weather Service
Peachtree City, GA
02/12/2014 02:42 AM EST
Follow Us:
weather.gov/atlanta



National Weather Service
Peachtree City, GA
02/13/2014 03:55 PM EST
Follow Us:
weather.gov/atlanta



Forecast

Observed